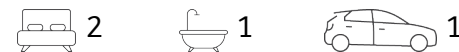




Hurry in on a Great Location



2/78 Churnwood Drive, Fletcher

Sold for \$417,500 (Aug 20, 2020)

(DUE TO THE EXISTING COVID19 LAWS, PLEASE OBSERVE PHYSICAL DISTANCING WHILE INSPECTING THE PROPERTY)

Dream Opportunity to secure this 2-year-old Townhouse, located in the Nikkinba Ridge Estate Fletcher!

Ideally positioned, this home offers indoor and outdoor living spaces with an extremely flexible and functional floor plan that will have broad appeal for many buyers.

With a design to suit all household types, and appointed with on trend fixtures throughout, this dual-level home is the complete package. Featuring two well-scaled bedrooms upstairs, main bathroom and centrally located rumpus room.

Showcasing a superb fully tiled open plan living and dining area downstairs which has the capacity to entertain your guests and allow you to live comfortably.

This area perfectly complements the contemporary style kitchen and inclusion of stainless steel appliances. With an ample amount of cupboard and bench space, you will never be short of storage.

Property ID:	L1488608
Property Type:	Townhouse
Building / Floor Area:	107
Garages:	1
Land Area:	98.0 sqm

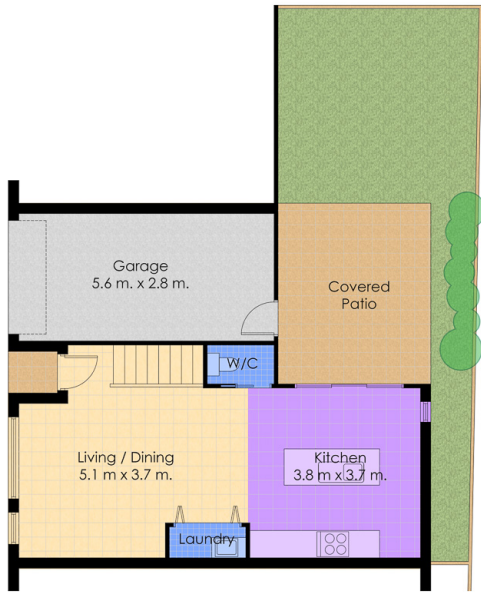
Tony Tolazzi
0414 253 545
tony.tolazzi@mayfield.rh.com.au

The living space provides access via sliding doors, to a paved alfresco and turfed yard with access for yard tools through garage door a rear.

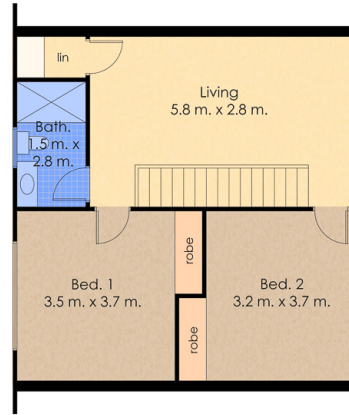
This home comes complete with powder room downstairs and remote and internal access from garage.

Situated in an ultra-convenient location, this home provides:

- Easy access to public transport.
- 1.3klm to Fletcher Village, Coles, chemist & cafe.
- 2.9klm to Fletcher Community Hall, sporting ovals.
- 1.9klm to Bishop Tyrell Anglican College.
- 14.5klm approx' to Lake Macquarie foreshore.
- 14.5klm approx' to Newcastle CBD.

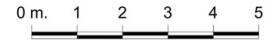


Lower Floor Plan
 Approx. Internal Floor Area: 107 sqm.



Upper Floor Plan

Raine&Horne® 2/78 Churnwood Dr
 Fletcher



Measurements and direction of north are approximate and are to be used as a guide only.