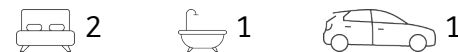




Handy to Everything



3/18A Morehead Street, Lambton

Sold for \$380,000 (Mar 02, 2020)

If you're looking for a sound investment or relaxing place to come home to, this low maintenance brick and tile unit will be perfect for you!

Featuring 2 bedrooms with built in robes, generous open plan lounge room accessing the front balcony, and separate dining area off kitchen. Mostly original but tidy bathroom combined laundry and separate W.C. Secure undercover access to the unit and large lock up garage with separate storage area.

Located opposite Lambton Park within a short walk to Lambton village shops, transport nearby and only minutes to Newcastle. Positioned on the first floor of a small boutique complex of 3 only. This property would make an ideal investment or home unit. Exceptional value at this price.

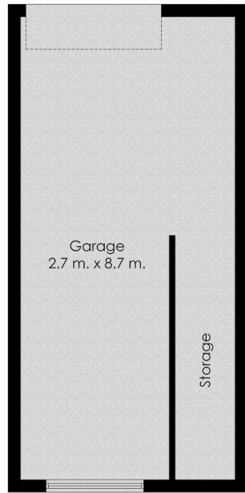
- Small unique complex of 3 only
- 2 Bedrooms, large main both with built-ins
- Spacious lounge area with access to balcony
- Original kitchen with ample storage & separate dining area

Property ID: L1155444
Property Type: Unit
Garages: 1

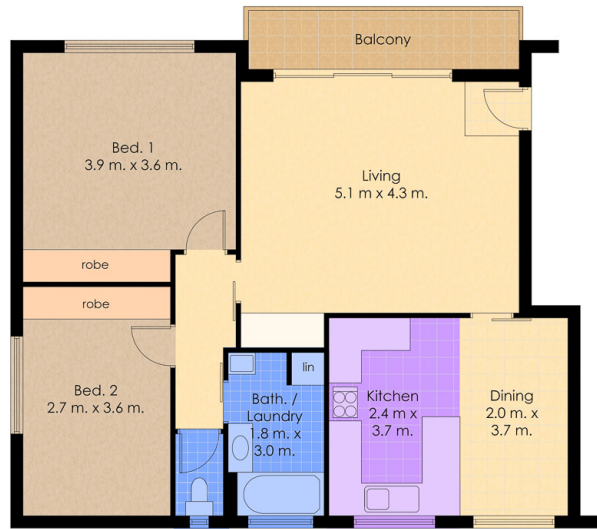
Tony Tolazzi
0414 253 545
tony.tolazzi@mayfield.rh.com.au

- Bathroom laundry combined with separate shower and W.C.

- Lock up garage and undercover access to unit



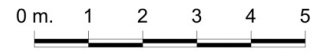
Lower Floor Plan



Upper Floor Plan
Approx. Internal Floor Area: 110 sqm.

Raine&Horne®

3/18A Morehead St,
Lambton



Measurements and direction of north are approximate and are to be used as a guide only.