

Over-sized and stylish with lifestyle on tap



1



1

8/28-32 Pine Street, Chippendale

Sold for \$620,000 (Nov 14, 2018)

Resting to the rear of a boutique warehouse conversion, this stylish abode provides a whisper quiet escape from the cosmopolitan world that is on its doorstep. A beautifully proportioned floor plan offers light filled contemporary appeal and delivers premium comfort making it a fuss-free, low stress purchase.

Timber floors create an immediate warmth adorning the open plan living and dining that sits under high ceilings and spills to the generous alfresco balcony. Reverse cycle air-con and a built in TV unit are pleasing extras. The kitchen is a stylish workspace finished with stone benchtops, an island breakfast bench, dishwasher and stainless appliances. Night-time comfort is assured with a generous master with robes and easy access to the modern bathroom.

A superior investment or lifestyle purchase, simply unpack and begin exploring the endless wine bars and cafes that dot the surrounding laneways, tranquil hidden parks and charming pubs. Stroll to the CBD, beautiful Victoria Park, Sydney University, Broadway & Central Park retail hubs, UTS, Redfern's vibrant vullage centre and transport options.

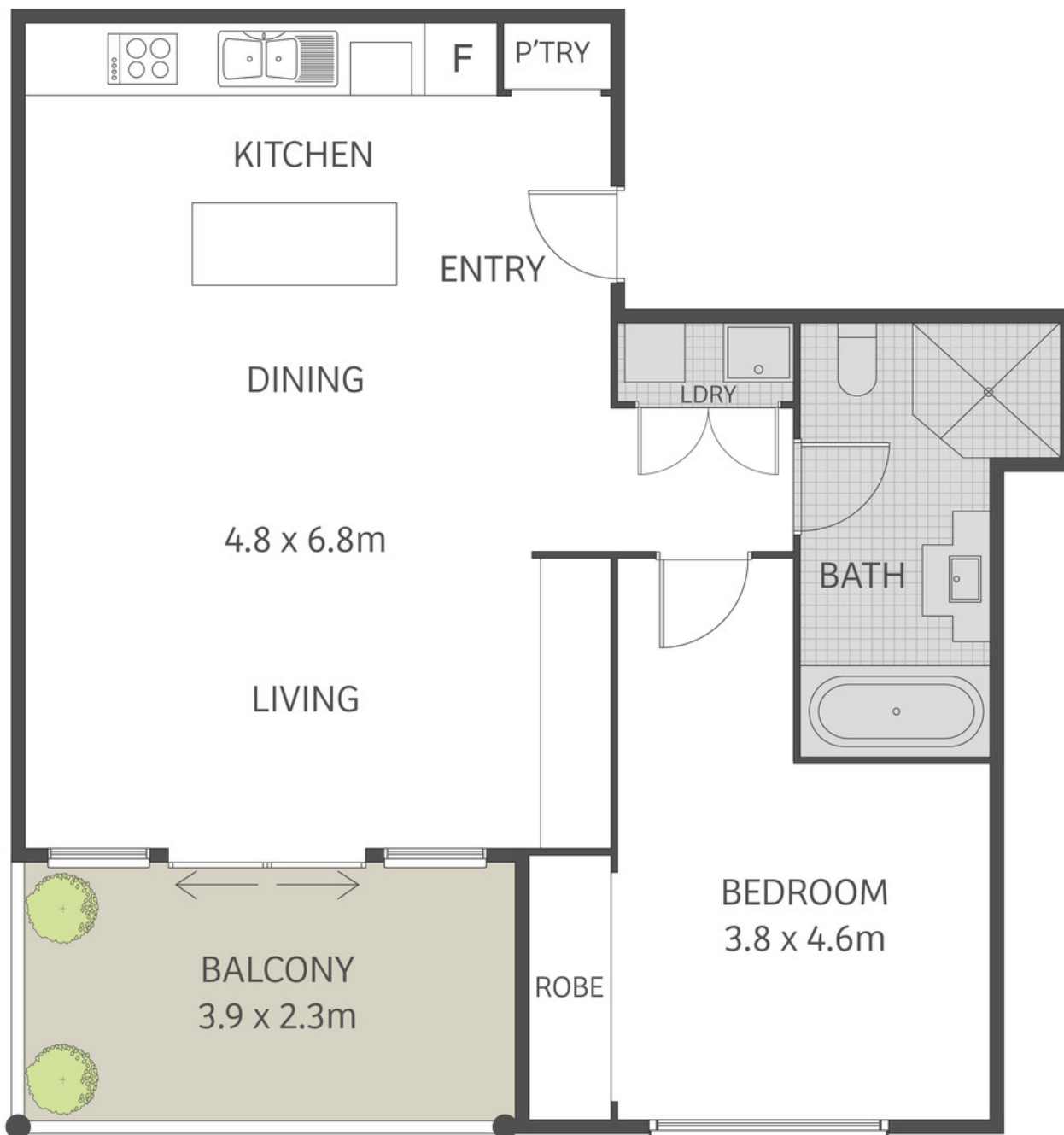
Property ID: 7819990
Property Type: Apartment
Building / Floor Area: 65

Matthew Dunkerley

0404 517 123

leasing@rhnewtown.com.au

Love your lifestyle



This floor plan is for marketing purposes and is to be used as a guide only. All efforts have been made to ensure its accuracy although interested parties are urged to rely on their own enquiries.