



Lovely Studio Apartment



## 105/62 CORDELIA STREET, South Brisbane

Sold

Located on top level of the perfectly positioned Allegro apartment complex. this compact studio apartment offers an enviable inner city lifestyle, perfect for any professional searching for a home away from home, a first home buyer looking to enter the market or a savvy investor after a healthy rental return.

The kitchenette is fully equipped with crisp white cabinetry and stainless steel appliances.

Sliding doors lead out to the balcony which has a birds-eye view of surrounding South Brisbane. There is approval in place for shutters to be installed on the balcony should the new owner want this added feature to create more usable space.

Featuring carpet and floor-to-ceiling windows, this stylish studio offers a relaxing sanctuary with spectacular views of its own. The contemporary styled bathroom, complete with contrasting floor and wall tiles, quality fixtures and fittings.

Other notable features include split system air conditioning and secure parking for one vehicle plus storage cage.

Residents of Allegro also benefit from exclusive access to a range of facilities, including pool, gym, home theatre, barbeque and entertaining area.

<b>Property ID:</b>	20583722
<b>Property Type:</b>	Apartment
<b>Garages:</b>	1

**Will Zhi Wang**

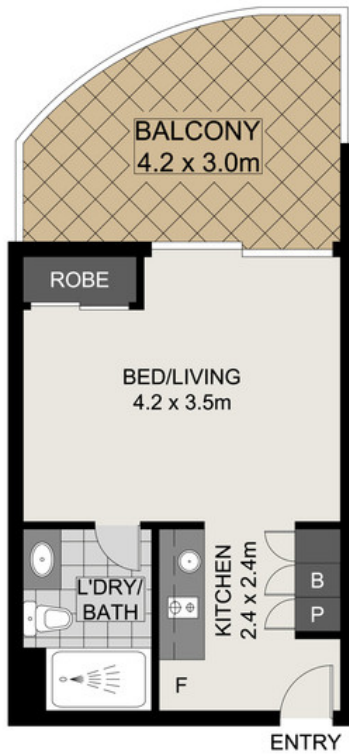
0400 943 723

[will.wang@onsite.rh.com.au](mailto:will.wang@onsite.rh.com.au)

Located moments from the hustle and bustle of the thriving South Bank precinct, this apartment is close to almost every amenity you could desire. A wide selection of cafes, bars and restaurants are well within walking distance. For an even wider selection, Trendy West End is a few moments away.

The South Brisbane train station is 500m away, ready to take you around town, while the Victoria Bridge provides easy access to the Brisbane CBD for all those city workers. Reputable schools in the area include Brisbane State High School, Somerville House, St Laurence's College.

Call to arrange an inspection today.



Scale in metres, indicative only. Dimensions are approximate. All information contained herein is gathered from sources we believe to be reliable. However, we cannot guarantee its accuracy and interested persons should rely on their own enquiries.

INT : 25.20m<sup>2</sup>  
 EXT : 10.79m<sup>2</sup>  
 CAR ACCOM. : 16.64m<sup>2</sup>  
 TOTAL : 52.63m<sup>2</sup>

**Unit 105/62 Cordelia Street, South Brisbane**