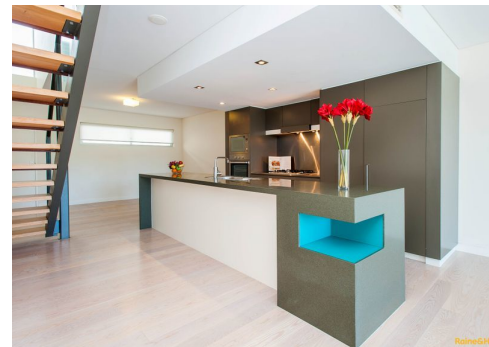




## Iconic Iceworks 2 Level Apartment



## U41/10 Dowse Street, Paddington

### Rented

TWO LEVEL APARTMENT – TOWN HOUSE IN PADDINGTON WITH 2 CAR PARKS

Fast Wi Fi, Good Plans – Instant Connection!

Is Space and Lifestyle Important? Then check this out!

Unfurnished

Situated in the trendy Iceworks Complex, you have a bird's eye view over the lush green landscape of the Paddington hills.

The spacious open plan design incorporates dining and living areas perfect for a relaxed lifestyle and alfresco entertaining.

The lower level provides:

- A very spacious living area with floor to ceiling glass doors
- Balcony overlooking the pool and Paddington hills

**Property ID:** R881917

**Property Type:** Apartment

**Garages:** 2

**Debbie L Wijetunge**

0417 007 652

debbie.wijetunge@onsite.rh.com.au

- Stream lined kitchen with centre island bench, gas cooktop, integrated fridge
- Stainless Steel appliances
- Slide out pantry and lots of storage space

On the upper level you will find:

- Spacious master bedroom with walk in robe and En-suite
- Second bedroom with built-in wardrobe and private balcony
- Second bathroom with shower/bath, services the second bedroom
- Separate laundry area includes washing machine and dryer

As well the apartment offers:

- Ducted air-conditioning
- 2 Basement car parks with lift access
- 25m pool, deck and BBQ area
- Professional Building Management
- Express bus to the CBD
- Opposite Ithaca Park
- Sorry NO PETS

A sensational location in the heart of Paddington's restaurant and shopping precinct. Located minutes from the CBD, and just a stroll from the delights of fabulous boutiques, designer shopping and an exciting selection of appealing cafes and restaurants. All within walking distance to Caxton Street, The Barracks Shopping Precinct and cinemas, and a stone's throw from the iconic Suncorp Stadium.

Call us to arrange an inspection.