



PARKVIEW SPACIOUS 2 BEDROOM IN THE REX APARTMENTS



106/50-58 Macleay Street, Potts Point

Rented

In the heart of cosmopolitan Potts Point, you'll be within a stroll of cafes, boutiques, Elizabeth Bay and Rushcutters Bay, while being within a few minutes of the CBD.

This over-sized cosmopolitan apartment presents an open layout with plenty of indoor / outdoor space, and an abundance of natural light.

IMPRESSIVE POINTS:

- Oversized 2 bedroom split-level apartment with 150SQ.M of space on level 1
- Double height alfresco entertaining balcony with stunning park views
- Freshly painted white and had updates made throughout the property.
- Both Queen sized bedrooms with built in robes
- Integrated kitchen with dark granite bench tops and quality appliances
- Internal laundry and ample storage

Property ID: R546263

Property Type: Unit

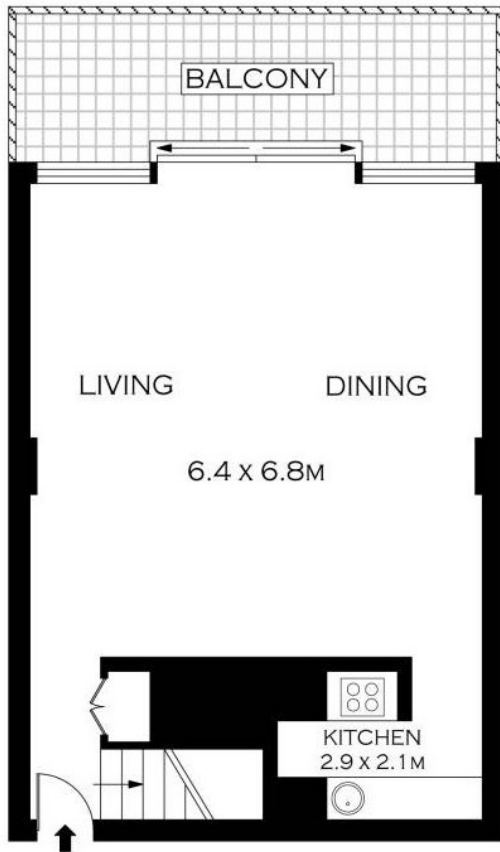
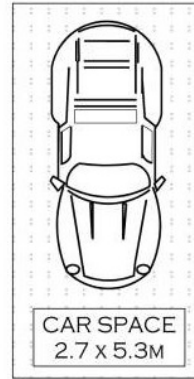
Garages: 1

Samuel Schumann

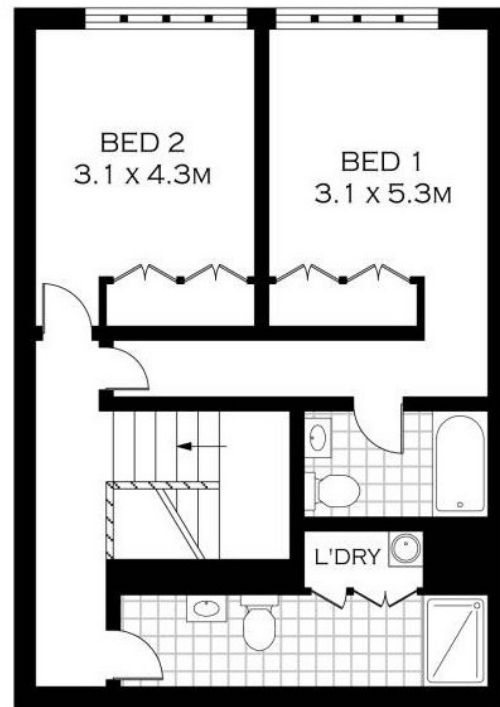
0407 986 886

samuel@pp.rh.com.au

- Dual zone ducted air conditioning, quality floating floor downstairs, and carpet upstairs, superb cross ventilation
- Security parking
- Elegantly renovated security lobby with security lifts
- BKH designed building with resort style facilities including indoor pool, gym, sauna (on level 2) and concierge



LEVEL ONE



LEVEL TWO

NOTE :- ONE SECURE CAR SPACE



PLANS SHOWN ONLY INDICATIVE OF LAYOUT. DIMENSIONS ARE APPROXIMATE.
Floor plans by www.realestatemarketingaustralia.com.au
Ref. No: 6792

LEVEL TWO : 58M ²
LEVEL ONE : 56M ²
BALCONY : 13M ²
CAR SPACE : 23M ²
TOTAL : 150M ²



106/50 MACLEAY STREET

POTTS POINT