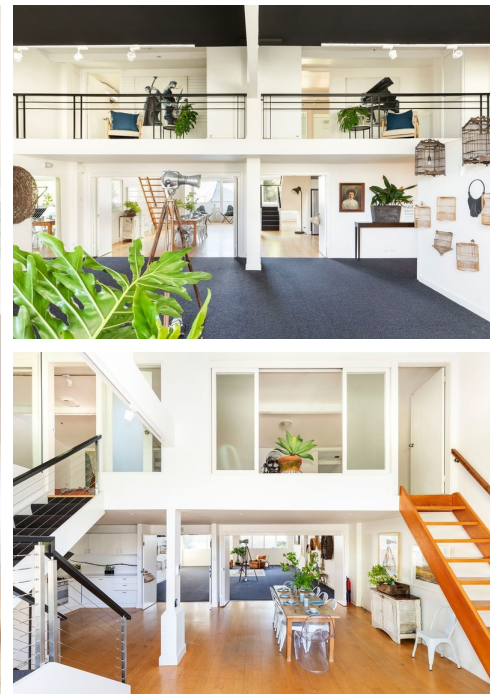


Industrial home, office and creative space



## 26-28 Rainford Street, Surry Hills

Sold

With exposed beams and walls of glass this warehouse residence retains its industrial edges within residential R1 zoning. Its natural light made it a renowned photography space for 40 years. Now a home and production studio, near the CBD, new light rail & Central. Leased parking available for 4 cars.

- 400sqm approx space over 3 levels & mezzanine

Property ID: L2424746

Property Type: House

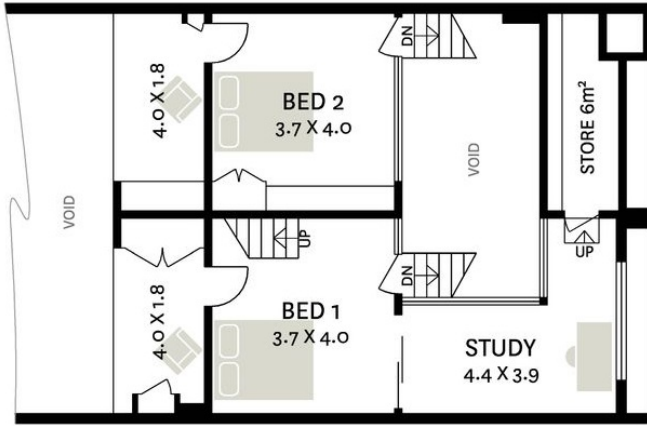
Garages: 3

**Samuel Schumann**

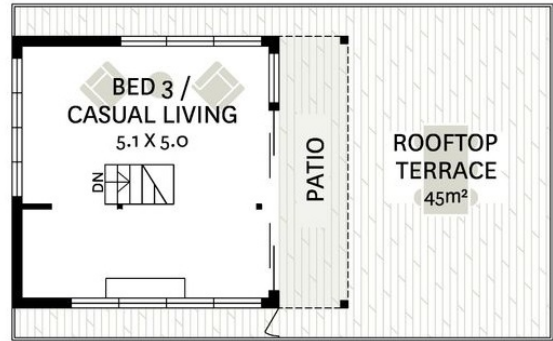
0407 986 886

samuel@pp.rh.com.au

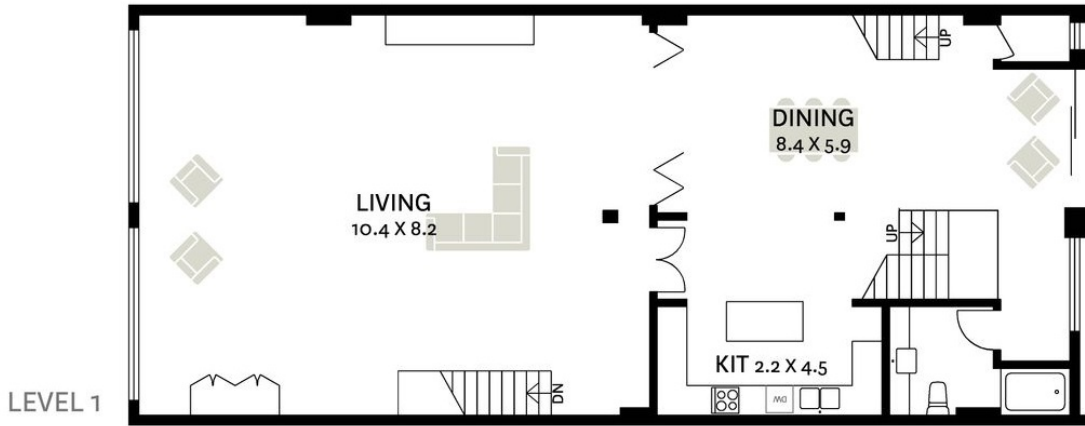
Approx. Internal Area: 410m<sup>2</sup>  
 Approx. Land Size: 173m<sup>2</sup>



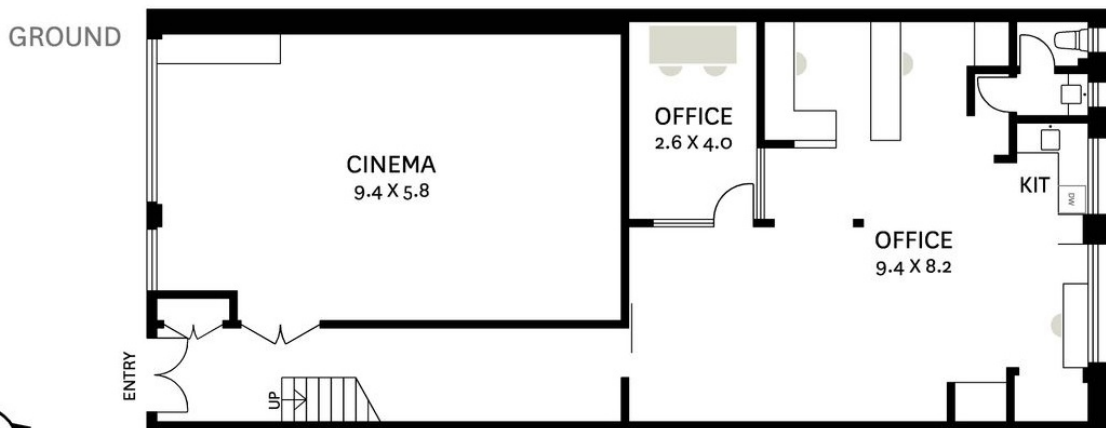
LEVEL 2



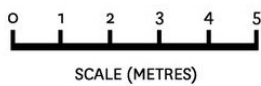
LEVEL 3



LEVEL 1



GROUND



WE BELIEVE THE INFORMATION IN THIS DOCUMENT TO BE RELIABLE, HOWEVER INTERESTED PERSONS SHOULD MAKE THEIR OWN ENQUIRIES. DIMENSIONS ARE APPROXIMATE.