



**SOLD BY JAMIE & JESSE WILMEN**



4



2



2

## 34 Sugar Glider Drive, Pottsville

Sold for \$560,000 (Oct 19, 2020)

RED HOT OPPORTUNITY

With retirement on the horizon the time has come for the owner to sell. The spacious 4 bedroom home is positioned on vast 705m that presents side access and room for a pool. The property is ideally situated opposite a nature reserve in the environmentally friendly Koala Beach Estate.

The home features a generous open plan with central kitchen, designated dining, and large living space.

The long term tenant is more than happy to stay on for years to come if required. To make the deal more attractive the owner has instructed us to encourage all offers. Be confident that this will be the best investment value on the market. For any additional information please contact Jamie Wilmen or Jesse Wilmen at Raine & Horne Pottsville/Cabarita Beach.

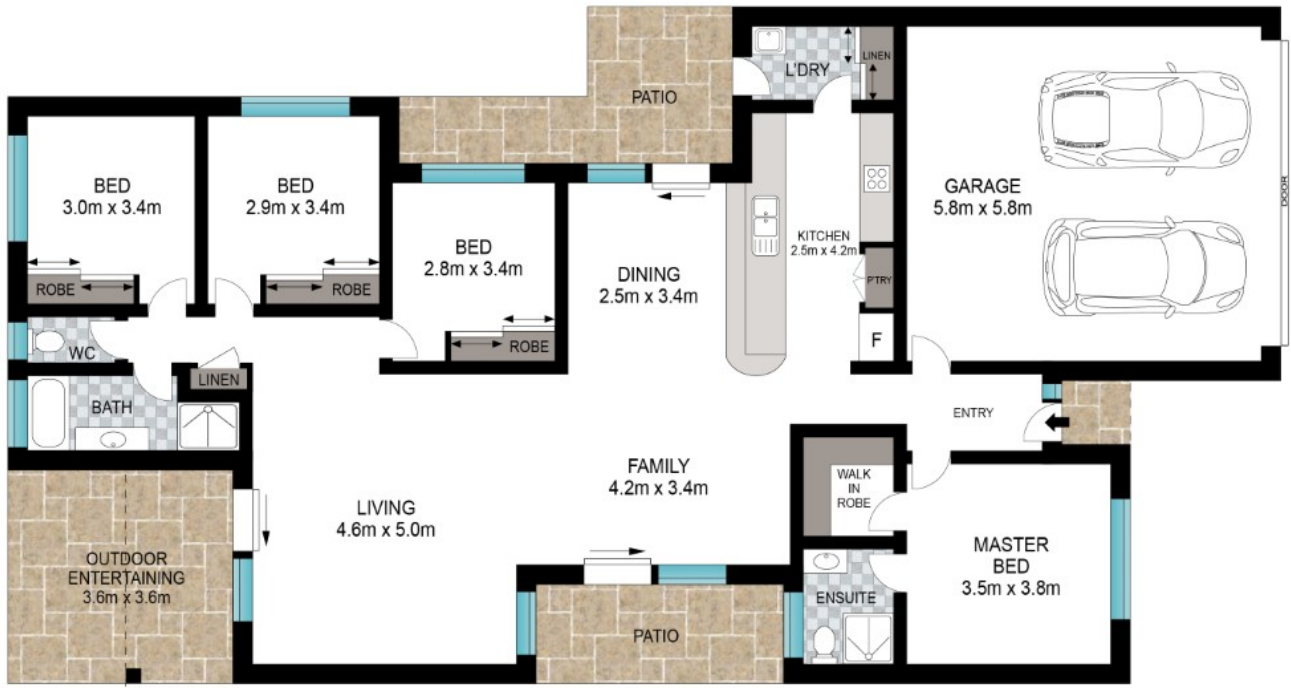
DISCLAIMER: We have in preparing this document used our best endeavours to ensure the information contained is true and accurate, but accept no responsibility and disclaim all liability in respect to any errors, omissions, inaccuracies or misstatements contained. Prospective purchasers should make their own enquiries to verify the information contained in this document.

<b>Property ID:</b>	L767470
<b>Property Type:</b>	House
<b>Building / Floor Area:</b>	159
<b>Garages:</b>	2
<b>Land Area:</b>	705.0 sqm

**Jamie Wilmen**

0422 617 773

[jamie.wilmen@pottsville.rh.com.au](mailto:jamie.wilmen@pottsville.rh.com.au)



INT: 175 m<sup>2</sup>  
EXT: 33 m<sup>2</sup>

Scale in metres. Indicative only. Dimensions are approximate. All information contained herein is gathered from sources we believe to be reliable. However, we cannot guarantee its accuracy and interested persons should rely on their own enquiries.

34 Sugar Glider Drive, Pottsville

**Raine & Horne.**