



**SOLD BY JAMIE & JESSE WILMEN**



4



2



2

## 43 Border Crescent, Pottsville

Sold for \$835,000 (Jul 03, 2020)

JOB TRANSFER MOTIVATES SALE

Seller motivation often presents buyer satisfaction. All buyers should be well satisfied with the price set on this substantial Pottsville home. The 4 bedroom home is situated in a popular street, in a popular beachside precinct on a large 832 sqm block. Achieving value for your money is a given.

Enjoy a relaxed open floor plan with separate living rooms either end of the house, conveniently separated by a central kitchen. One step sideways and you enter the great outdoors via a super sized outdoor entertaining area, all under roof. There is no shortage of back yard for the children, pets or pool and there is large side access for the caravan, boat or work trailer. There is a makeshift carport that can stay or go, pending your needs. Solar electricity, gas cooking and gas hot water.

The property is a flat walk to creek and beach and a 2 minute drive to shops and restaurants. Slip down the scenic Coast Road for a day at Byron Bay or jump on the motorway to Tweed/Coolangatta.

Inspect by appointment by contacting Jamie Wilmen or Jesse Wilmen @ Raine & Horne Pottsville/ Cabarita Beach.

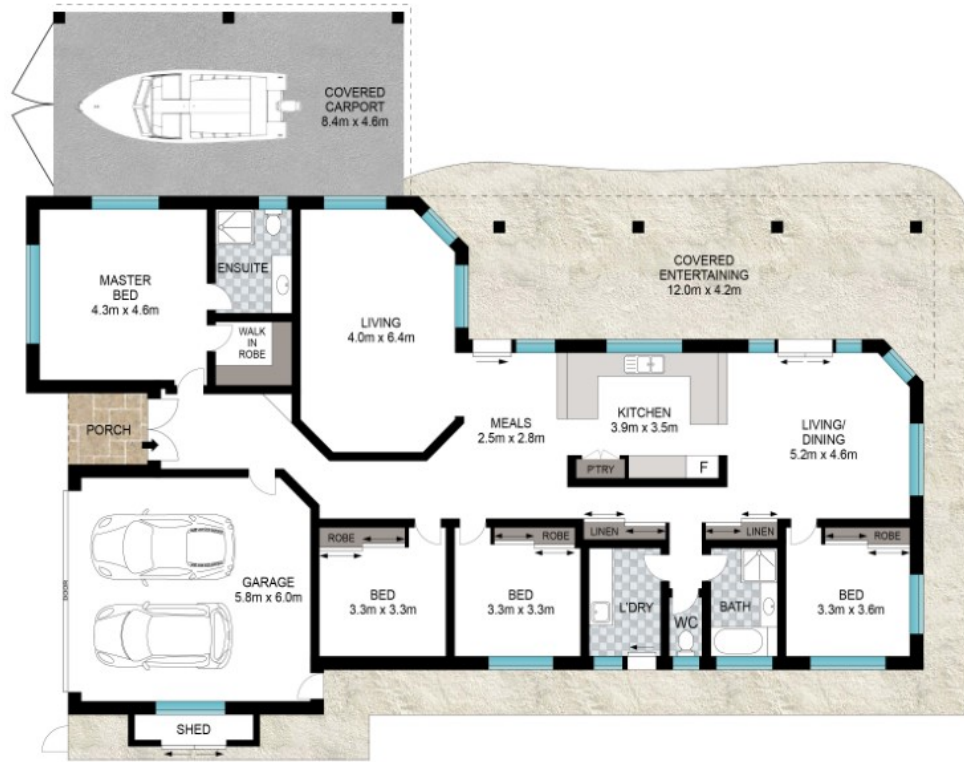
Property ID:	L767468
Property Type:	House
Garages:	2
Land Area:	832.0 sqm

**Jamie Wilmen**

0422 617 773

[jamie.wilmen@pottsville.rh.com.au](mailto:jamie.wilmen@pottsville.rh.com.au)

DISCLAIMER: We have in preparing this document used our best endeavours to ensure the information contained is true and accurate, but accept no responsibility and disclaim all liability in respect to any errors, omissions, inaccuracies or misstatements contained. Prospective purchasers should make their own enquiries to verify the information contained in this document.



Scale in metres. Indicative only. Dimensions are approximate. All information contained herein is gathered from sources we believe to be reliable. However, we cannot guarantee its accuracy and interested persons should rely on their own enquiries.

INT: 210 m<sup>2</sup>  
EXT: 93 m<sup>2</sup>

43 Border Crescent, Pottsville

**Raine & Horne.**