



KURRALTA PARK
1/26 Clifford Avenue

1 1 1

GORGEOUS UPDATED UNIT WITH LARGE PRIVATE COURTYARD!!

This spacious unit is situated in the heart of Kurralta Park in this prime location just minutes from the City, beach, airport, and more.

Tastefully updated throughout, this unit is very light and bright giving you that welcoming feeling as soon as you walk through your front door.

Living inside, or entertaining outside is a breeze and this unit would be ideal for those wanting to reside in it and enjoy all the benefits living in this location has to offer, or add it as an excellent investment property to your portfolio.

The unit features:

- Large master bedroom with floor to ceiling build in storage cupboards
- Fully tiled ensuite bathroom with extra large shower and combined laundry
- Light and bright lounge/dining area with reverse cycle a/c, ceiling fan, and timber plantation shutters
- Updated galley kitchen with gas stove, and ample bench and cupboard space
- Private paved front courtyard ideal for outdoor entertaining
- Allocated off street undercover carpark
- Ultra convenient location and more!

Property ID	L458764
Property Type	Unit
Building / Floor Area	50
Garages	1
Land Area	145.0 sqm

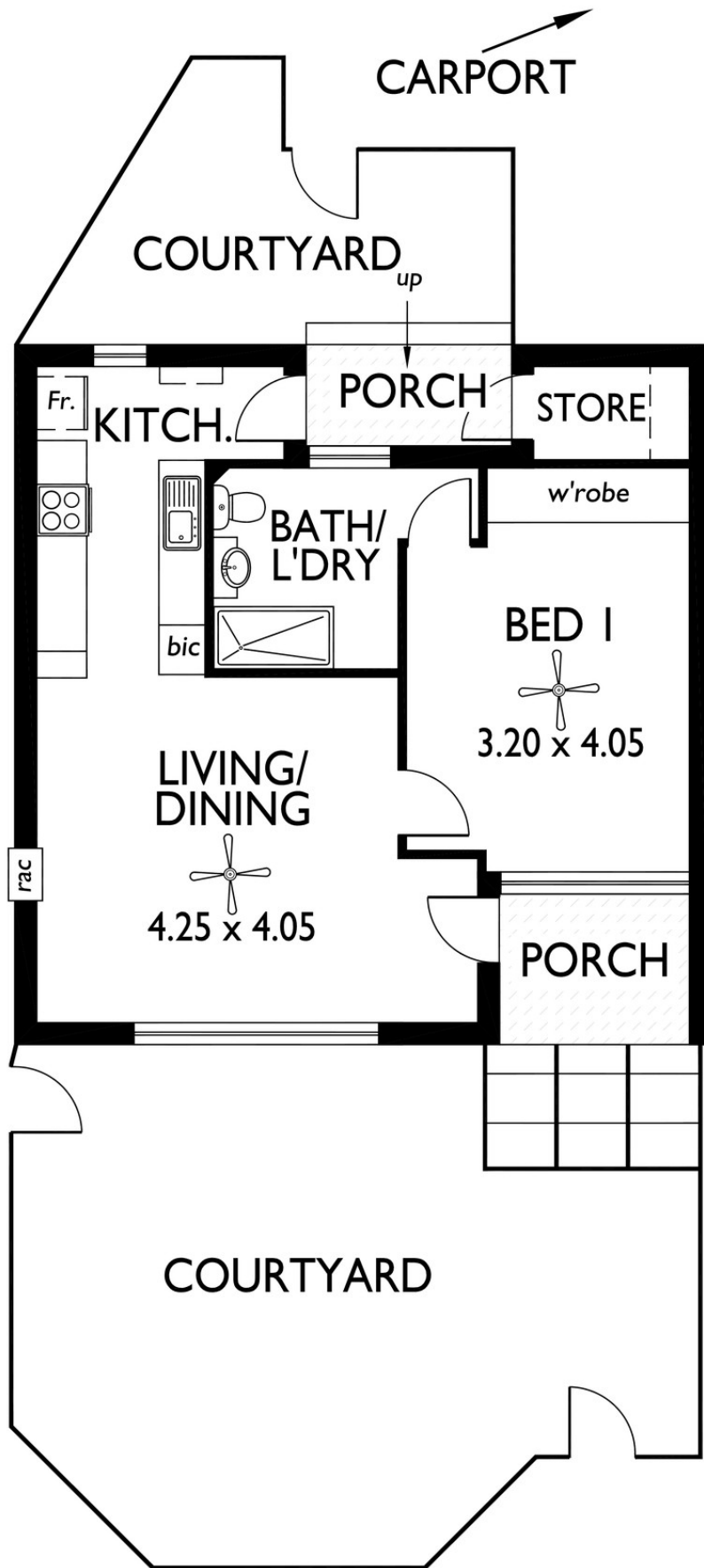
AGENT

John Cullen

0411 607 888

john.cullen@kp.rh.com.au

This Is The Unit You Have Been Looking For!!



This drawing is for illustration purposes only. All measurements are approximate only and information intended to be relied upon should be independently verified.