



BERRIMA
10 Jellore Street

150 sqm

4 

"The Bell Gallery" now for lease!

\$37,120.00 pa + GST

"The Bell Gallery" is now available for the first time in 7 years!

With endless opportunities for the space in the heart of Berrima's CBD, you will be surrounded with passing trade & the growing community attraction.

The main gallery is carpeted with high ceilings & view of wooden beams, with natural light, air conditioning/fans & secure parking. Detached from the main gallery is a private office/storage room with kitchenette & bathroom.

Offering 150sqm with front verandah of gorgeous street appeal.


Maintenance of these exquisite gardens are taken care of for you!


Call now for an inspection with Matthew Anstee on 0400 555 088
matthew.anstee@sh.rh.com.au or Ashley Kersten on 0447 555 001
ashley.kersten@sh.rh.com.au, opportunities like this do not come along often!

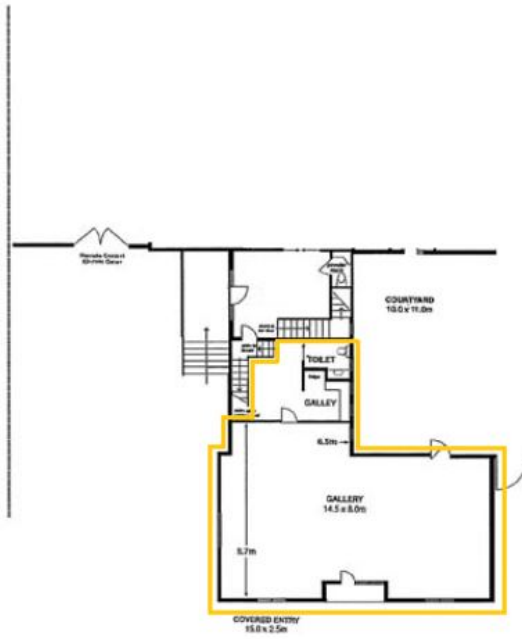
Property ID	L1031526
Property Type	Retail
Building / Floor Area	150
Garages	4

AGENT

Matthew Anstee

 0400 555 088

 matthew.anstee@sh.rh.com.au



ground floor
GALLERY

Raine & Horne
Commercial