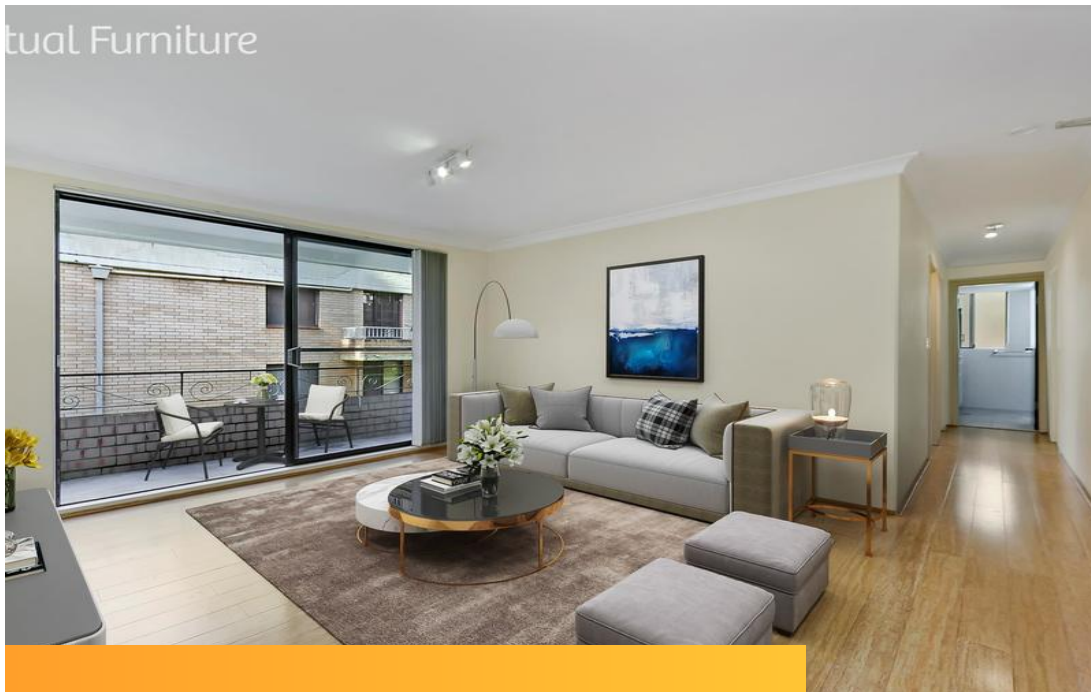


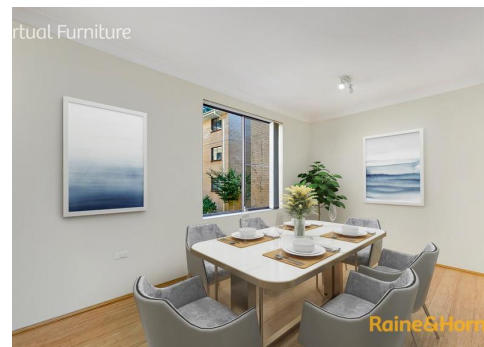
Virtual Furniture



Spacious, Quiet and Convenient



Virtual Furniture



2



1



1

## 15/201 Waterloo Road, Marsfield

Sold for \$622,000 (Oct 06, 2020)

Conveniently positioned in a sought after, quiet set back location in Marsfield is this well-present 2-bedroom unit. Easy access to local shops, cafe, parks, Sports ground, Epping Boys High and walk to Macquarie University, City buses, train station, Macquarie shopping centre and Macquarie Park Business District. Ideal for homeowner or great investment opportunity.

Features:

- \*Light filled and well sized 2 bedroom
- \*Large Living opens to a sunny balcony
- \*Modern kitchen with stone bench tops
- \*Separated dining off the kitchen
- \*Updated bathroom and stylish vanity
- \*Timber floors throughout
- \*Internal laundry with dryer

Property ID: L3136870

Property Type: Unit

Garages: 1

Jenny Zhang

0425558882

jenny.zhang@carlingford.rh.com.au

\*Lock up garage and plenty visitor parking

\*Total 94sqm area: Unit 80sqm, garage 14sqm

\*Approx. Outgoings: Strata \$659/q, Council \$308p/q, Water \$177p/q

- School catchments of Epping Boys, Cheltenham Girls and Eastwood Height Public.