



**BOWRAL**  
2/30 Wingecarribee Street

25 sqm

## Offices in Bowral CBD

**\$9,500 pa +GST**

Located in Bowral's CBD- Close to Cafe's, Retail & popular Corbett Gardens.

Upstairs Suite 2:

2 Office spaces

Floor Space – 25m<sup>2</sup>

Features

- Two separate offices
- Air conditioning
- Separately metred for electricity
- Available now

For further enquiry or to book an inspection please contact the office on 4861 4444.

Property ID	L3245575
Property Type	Offices
Building / Floor Area	25

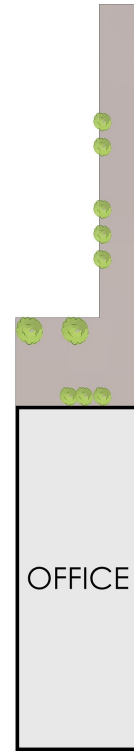
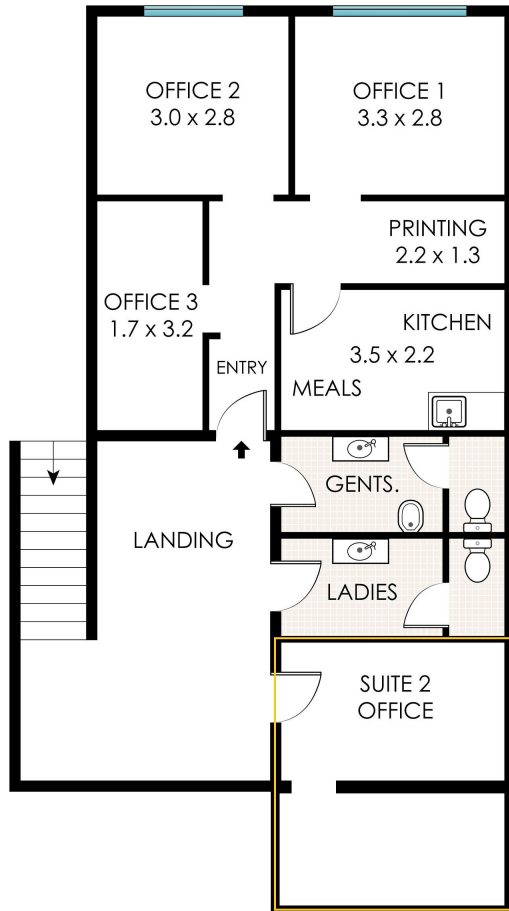
### AGENT

**Andrea Gibney**

📞 0400 555 655

✉ [andrea.gibney@sh.rh.com.au](mailto:andrea.gibney@sh.rh.com.au)

LAMOND LANE



WINGECARRIBEE STREET

FLOOR PLAN AREA 54 m<sup>2</sup>

**Raine & Horne**®