



Perfect Family Home !!



4



2



2

35 Smile Crescent, Wyndham Vale

Sold for \$500,000 (Dec 09, 2019)

Cleverly designed for everyday comfort. This is a home that will be enjoyed by the whole family.

This perfectly maintained residence is sure to suit many first home buyers & investors. Located in the sought-after Jubilee Estate, a fast-growing pocket of Wyndham Vale and surrounded by all the amenities.

Close to Wyndham Vale station, Manor Lakes shopping centre, schools, parklands and much more!

Property Features included:-

- Master bedroom with walk in robe and full en-suite.
- 3 other Bedrooms with built in robes
- Formal Lounge
- Double garage with internal access.

Property ID:	L620062
Property Type:	House
Garages:	2
Land Area:	423.0 sqm

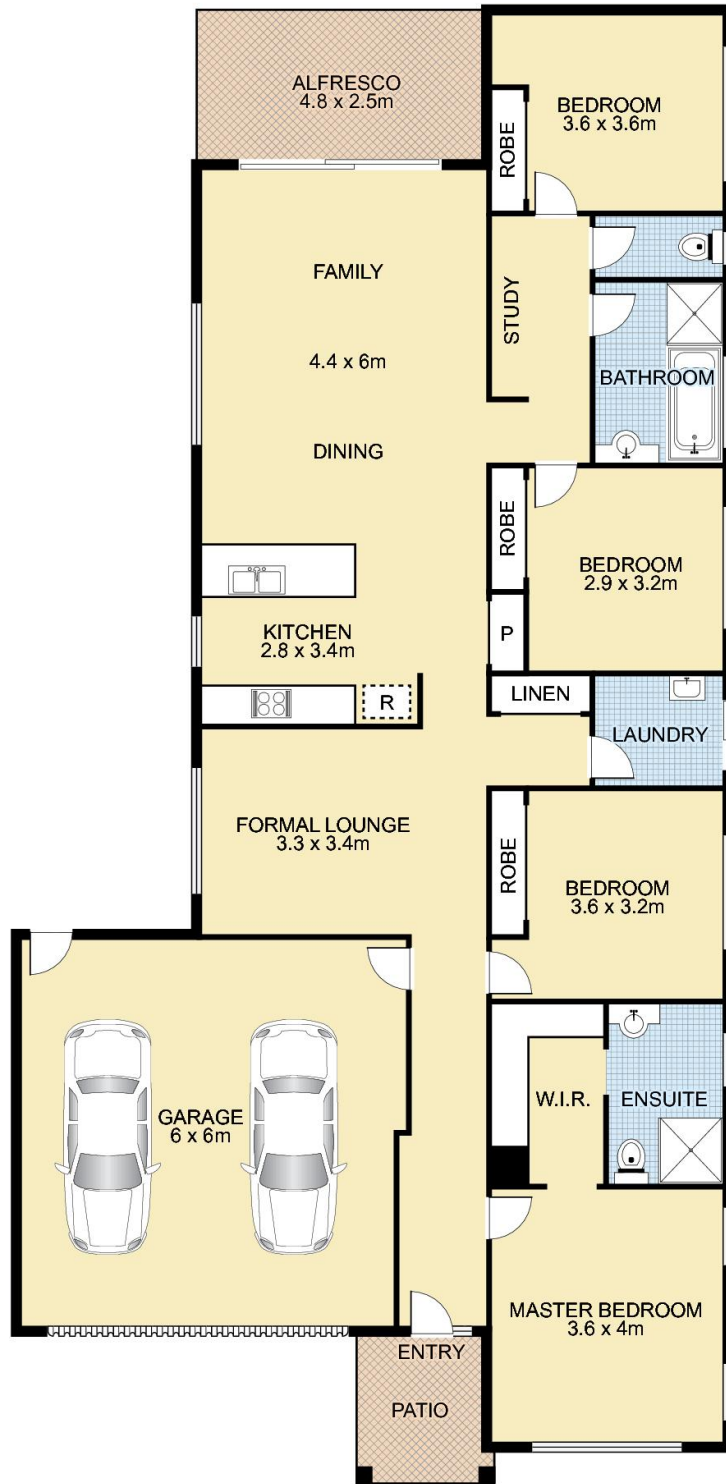
Yash Ghedia
0447 222 999
yash.ghedia@reservoir.rh.com.au

- Stunning kitchen with abundance of cupboard space and 900 mm stainless steel appliances and dishwasher.
- Open plan family and meals.
- Ducted heating and cooling.
- Low maintenance front and back yards.

Be quick to secure this one!

Please see the below link for an up-to-date copy of the Due Diligence Check List:

<http://www.consumer.uic.gov.au/duediligencechecklist>



35 Smile Crescent, WYNDHAM VALE



This floor plan is intended as a guide only. Layout dimensions are approximate only. No representations or warranties of any nature whatsoever are given or intended. Any person using this information should rely on their own enquiries. Floor Plans by SURROUNDPIX.