



ARNCLIFFE
9 Marinea Street

5  2  2 

OPULENT TRI-LEVEL RESIDENCE

Auctioned

The striking impression begins just beyond the front door, with a light-filled, contemporary scheme flowing from the spacious lounge room to the open-plan kitchen, dining space, and adjoining terrace.

Up the granite staircase you'll find a sunny landing, balcony and four bedrooms, including a master suite with ensuite and private terrace. Venture to the lower level to discover an elegant wine cellar and home theatre.

A landscaped yard, covered entertainment area and outdoor kitchen complete this unbeatable offering. The drawcards extend beyond the front gate, with a playground across the road and two excellent schools just footsteps away. Set in a quiet, picturesque street, the home is a 10-minute walk from Arncliffe Station and village, a five-minute drive from local beaches, and 20 minutes from the city.

Ticking every box for a dream family home, with a few surprises besides, this solid brick and concrete slab residence must be seen to be believed.


Features:

- Rear lane access to a double garage
- Four bedrooms with built-in wardrobes
- Luxurious main bathroom with spa; ensuite and two additional W/Cs

Property ID:	19600810
Property Type:	House
Garages:	2

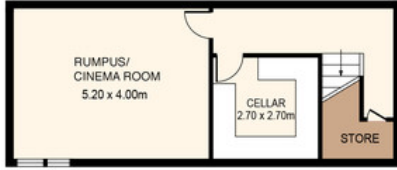
AGENT

Sam Abbas

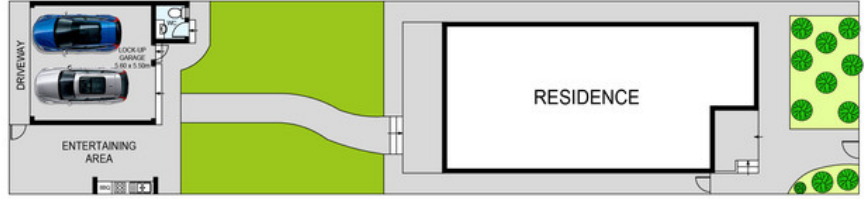
 0406 750 075

 sam@rockdale.rh.com.au

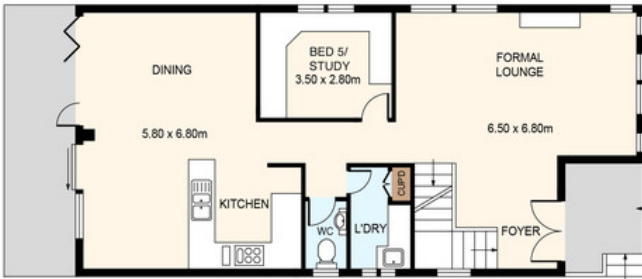
- Home office/guest bedroom on the ground floor
- Ducted air conditioning plus two Rinnai gas fireplaces
- Theatre room with projector and movie screen
- 730-bottle wine cellar, lined with bluestone tiles
- Solid timber kitchen offering double Falcon oven and gas cooktop
- Landscaped yard including a covered terrace and outdoor entertainment area with inbuilt barbecue and kitchen



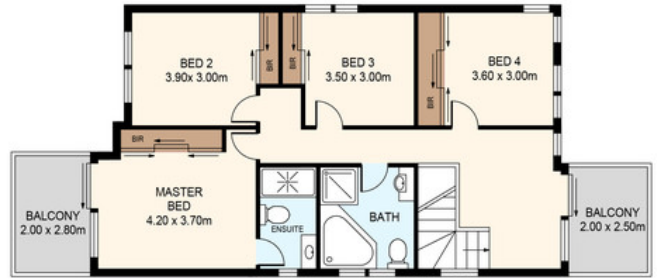
LOWER GROUND FLOOR



SITE PLAN
(NOT TO SCALE)



GROUND FLOOR



FIRST FLOOR



DISCLAIMER: THIS IS FOR ILLUSTRATIVE PURPOSES ONLY.
ALL DIMENSIONS ARE APPROXIMATE AND IT DOES NOT
CONSTITUTE PART OF ANY LEGAL DOCUMENTS.

ADDRESS:

9 MARINEA STREET, ARNCLIFFE

FLOOR PLAN BY www.sosphotography.com.au