



A Very Well Presented Villa Home

Raine&Horne



3



1



1

17 Eton Common, Ingle Farm

Sold for \$339,000 (Oct 23, 2020)

Situated in a Picturesque Ingle Farm Estate in a quiet culdesac Court amongst other modern quality homes is this very attractive and well maintained low maintenance Villa Home. An absolute ideal opportunity if you are scaling down or as a comfortable first home for a couple or small family. This home is currently let to an excellent tenant @ \$320 per week if an investment is your preference. Overall, this wonderful home has many great features, some of which are as follows:

- 3 Bedrooms (Built in Robes to the Master)
- A Three Way Bathroom – Ensued to the Master Bedroom
- Separate Entry and Central Hallway
- Spacious Open Plan Family Room Incorporating a Separate Dining Area
- Functional Kitchen with Ample Cupboards
- Ceramic Tiled Floors to Traffic and Main Areas and Pleasant Neutral Décor
- Ducted Air Conditioning and Gas Heating

Property ID: L3146272

Property Type: House

Carports: 1

Land Area: 300.0 sqm

Andrew Harvey

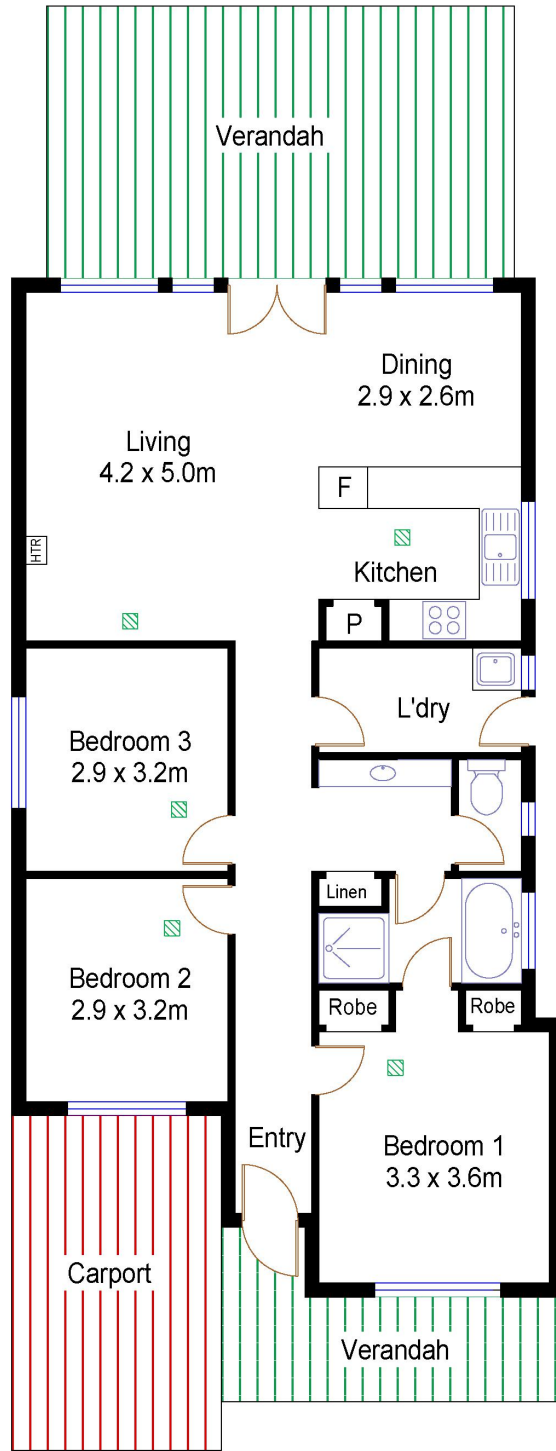
0412 088 850

andrew.harvey@salisbury.rh.com.au

- Stratco Colourbond Outback Verandah with Patternpaving
- Colourbond Fenced Rear Yard with Attractive but Low Maintenance Gardens
- Security Rollershutters to Front Windows and an Alarm
- Carport Under the Main Roof and a Patternpaved Driveway

A wonderful opportunity for an investor or buyer seeking care free low maintenance living with all the creature comforts. There is virtually nothing you will need to do other than move in and relax.

Shed



AREA	M ²
INT	93
VERANDAH	34
CARPORT	14
TOTAL	141

17 Eton Common, Ingle Farm

Scale in metres. Indicative only. Dimensions are approximate. All information contained herein is gathered from sources we believe to be reliable. However we cannot guarantee its accuracy and interested persons should rely on their own enquiries