



SALISBURY DOWNS
33 Leslie Mc Intyre Avenue

3  1  2 

Perfectly Positioned

Sold for \$250,000 (Sep 14, 2018)

1960's timber frame home built to last with 2.7m high ceilings. Ideal for retirees looking to down size, first home buyers and savvy investors.

Conveniently located close to public and private schools, Hollywood Plaza shopping centre and public transport.

Features include:

3 bedrooms

Built in mirrored robes to master

Updated gas kitchen with overhead cupboards

Open plan living areas

Sun room

Updated bathroom with glass shower screen

Gas heating


Reverse cycle wall air conditioner

Ceiling fan throughout

Property ID:	19121546
Property Type:	House
Carports:	2

AGENT

Andrew Harvey

 0412 088 850

 andrew.harvey@salisbury.rh.com.au

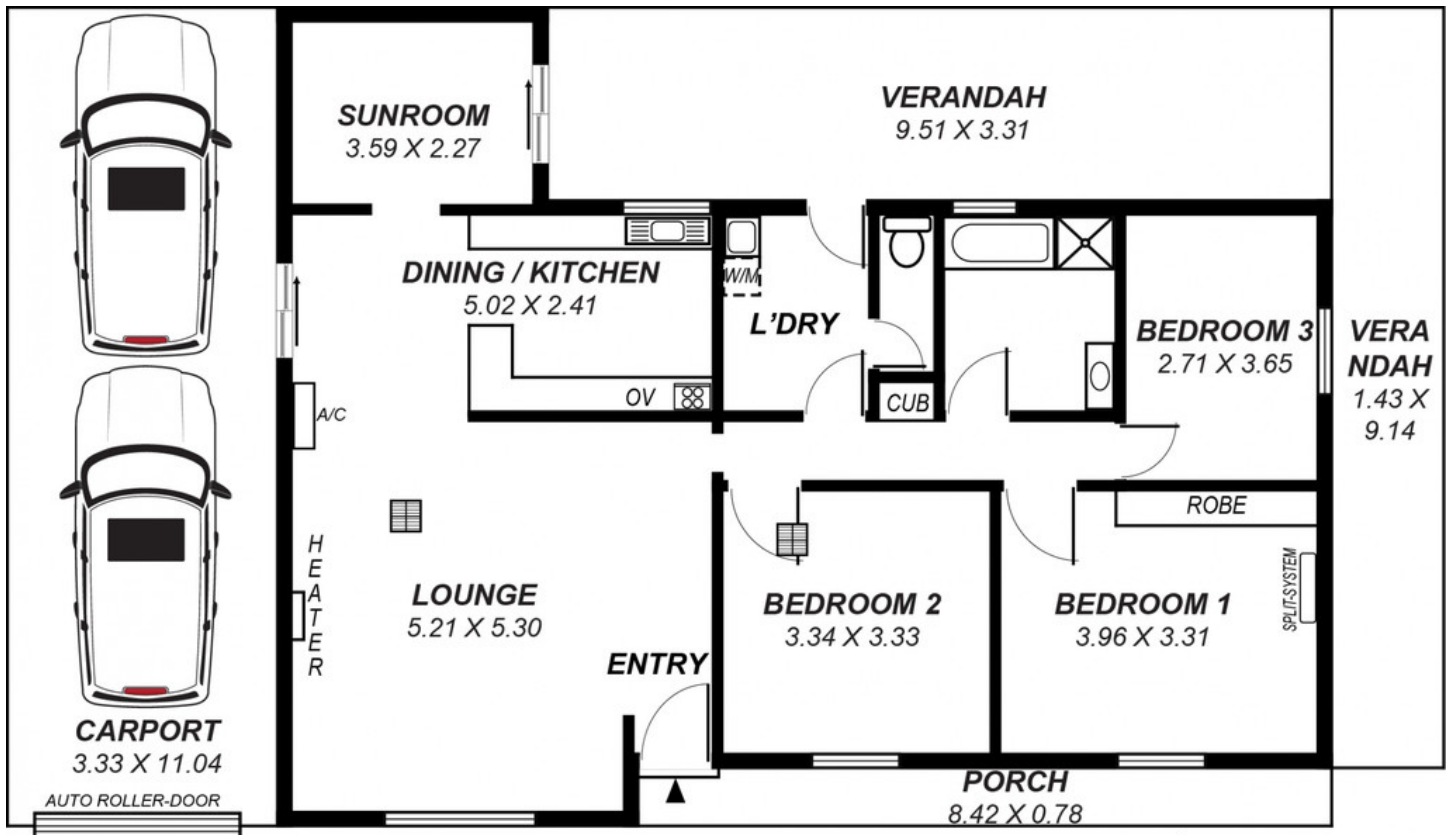
Continues gas hot water system

Security roller shutters

Double length carport

Undercover outdoor entertaining area

For prompt viewing call Darren today!



Area	m ²
Living:	93.38
Porch:	06.57
Verandah:	44.55
Carport:	36.76
Total:	181.26

*This drawing is for illustration purposes only .
 All measurements are approximate and details intended
 to be relied upon should be independently verified.*