



READY TO MOVE IN



2



1



1

1/35 Parsonage Place, Sorell

Sold for \$355,000 (Jul 22, 2020)

This immaculate 2 bedroom unit in Sorell would make a great first home or investment property.

The unit is constructed from polystyrene panels with a rendered finish giving a great energy rating and additionally blocking any outside noise.

Each of the bedrooms are double sized having built-in-robos, the main having access to the bathroom. The bathroom has a separate vanity, shower and bath.

Tidy kitchen area features quality appliances and sleek granite bench tops.

The living area is open plan in design with easy access from the kitchen and outside to the courtyard at the rear of the home.

The property has an undercover carport at the entrance of the home.

Situated on the flat and easy walking distance to central Sorell with all its services.

The tenants have just moved out so this property is ready for a new owner to move in, or an investor has the ability to achieve \$340-\$360 pw in rent. With a previous unit having just been

Property ID:	L1152457
Property Type:	House
Building / Floor Area:	94
Carports:	1
Land Area:	253.0 sqm

Danny Boon

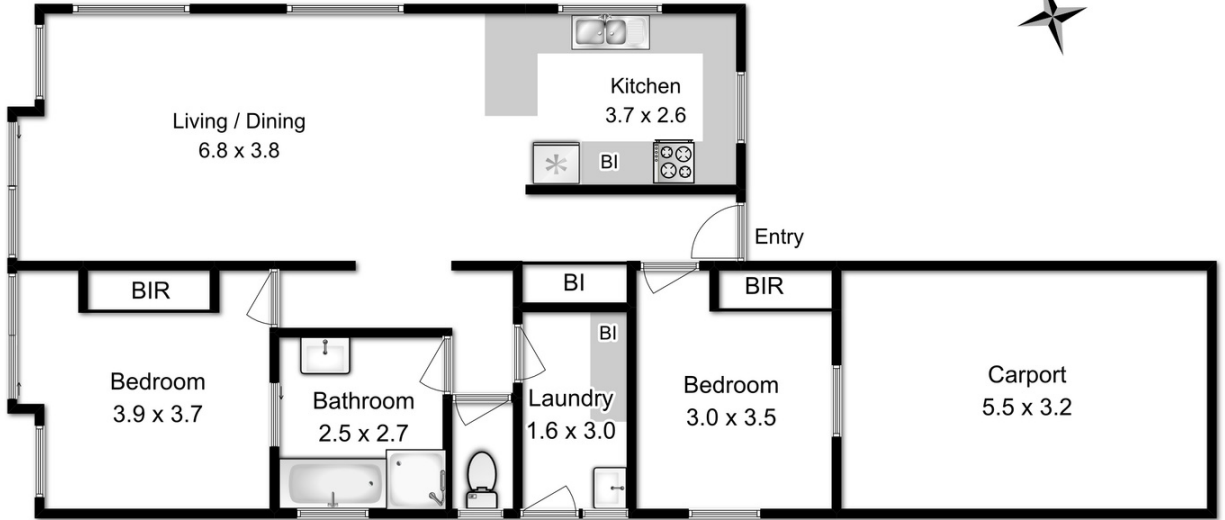
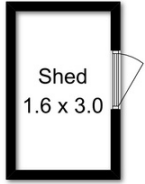
0427 010 300

danny.boon@sorell.rh.com.au

sold quickly, do not miss the chance to inspect.

Call Danny to arrange your viewing.

All measurements are internal and approximate
This plan is a sketch for illustration not valuation
Produced by open2view.com for Raine & Horne Sorell



Floor Area approx: 94sqm
(excluding shed and carport)