



CLOSE TO EVERYTHING - FANTASTIC 1ST HOME



21 Milburn Place, Glenorchy

Sold for \$380,000 (Feb 18, 2020)

Here we have this neat and tidy, three bedroom, low maintenance home ready for you to move in or make as a great investment.

This brick and tile property is set on a 756m² block with open plan kitchen and dining. The separate lounge area features a Kent wood heater and utility room adjoining. NBN is connected to the property.

Outside there is a single garage with additional storage space. The home sits at the end of a cul-de-sac with a local park off the same cul-de-sac.

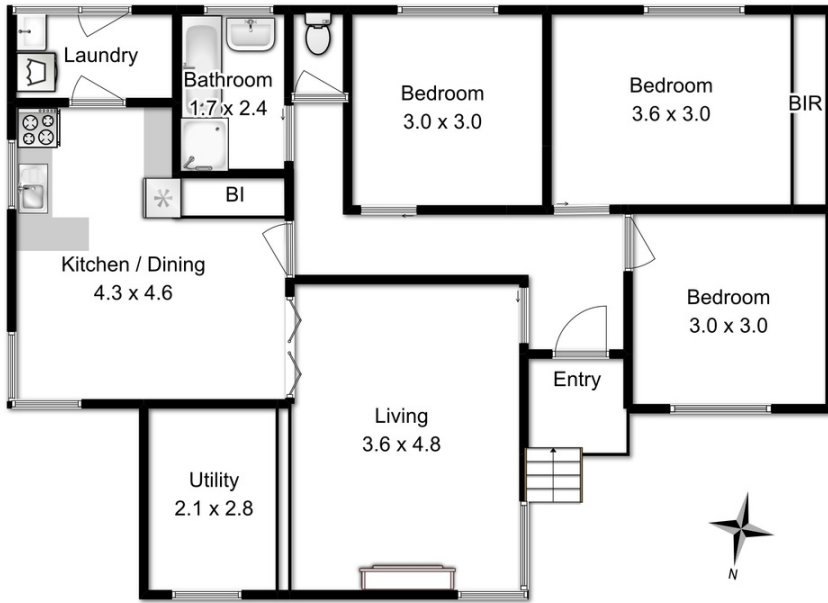
Just a short 5 minute drive to central Glenorchy or central Moonah with many services. This is a must see property.

Property ID:	L1153802
Property Type:	House
Building / Floor Area:	99
Garages:	1
Land Area:	756.0 sqm

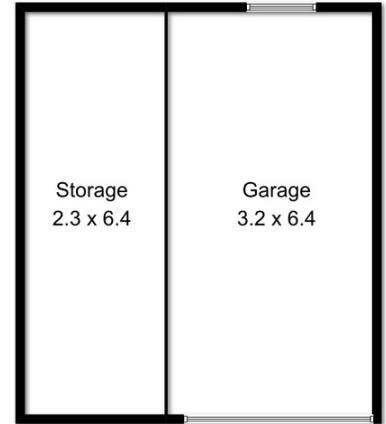
Greg Jones

0419 325 439

greg.jones@sorell.rh.com.au



House floor area approx 99sqm
(excluding garage / storage)



All measurements are internal and approximate
This plan is a sketch for illustration not valuation
Produced by open2view.com for Raine & Horne Sorell