



SORELL
Unit 1/8 Forcett Street

2  1  1 

LOW MAINTENANCE CENTRAL BRICK UNIT

Located in central Sorell this neat & tidy two bedroom unit features open plan design.

The living area is kept comfortable with a heat-pump for both warmth & cooling. At the rear of the unit is the combined bathroom & laundry.

Upstairs both of the bedrooms are a good size and have built-ins.

Outside there is a private fenced yard at the rear of the property and landscaped gardens in the front yard.

Located less than five minutes walk to central Sorell and your choice of supermarkets or 10 minutes drive to local beaches or Hobart Airport.


The property also has a reserved parking bay and is very neat & tidy suiting an investor, first home buyer or retiree alike.


Centrally located units in this price range are getting harder to find so be quick.

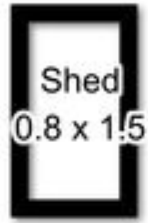
Property ID:	20013929
Property Type:	Unit
Building / Floor Area:	72
Open Parking:	1

AGENT

Greg Jones

 0419 325 439

 greg.jones@sorell.rh.com.au

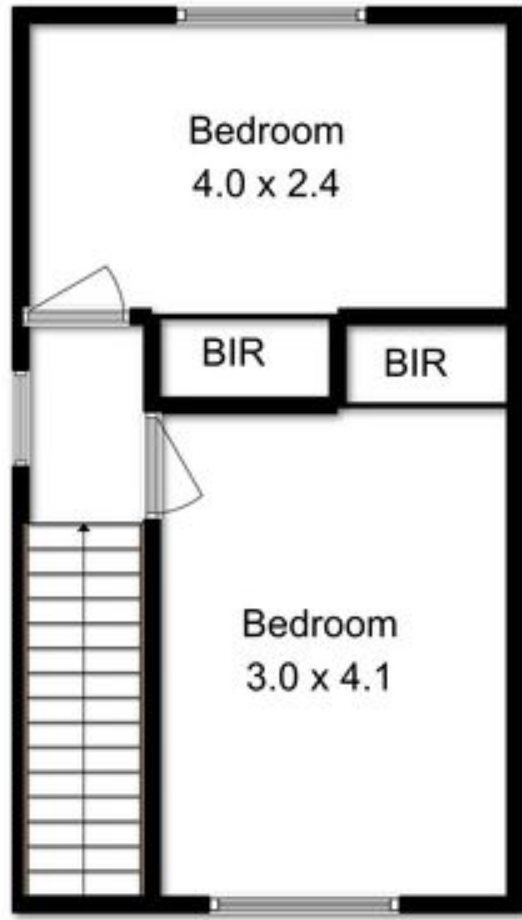


Shed
0.8 x 1.5



Lower Level

Upper Level

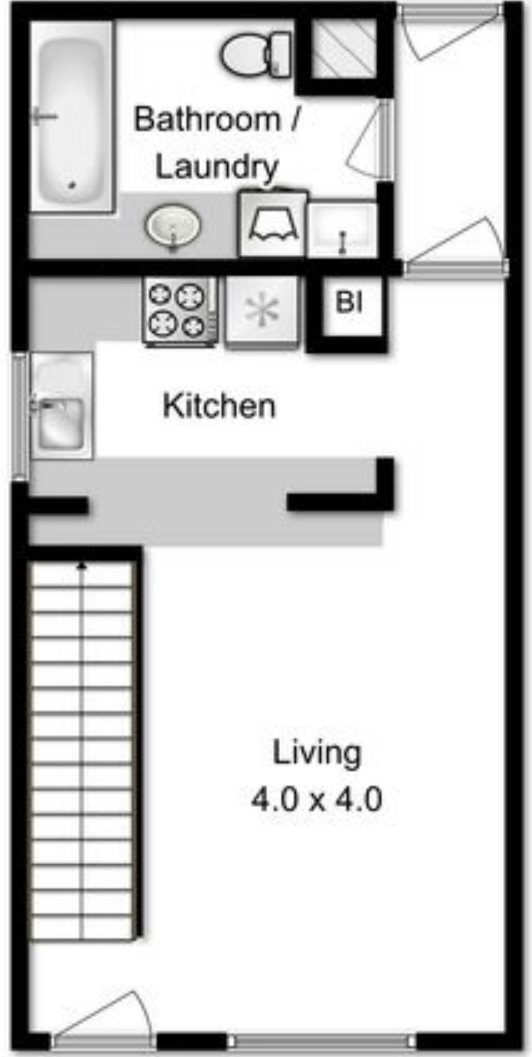


Bedroom
4.0 x 2.4

BIR

BIR

Bedroom
3.0 x 4.1



Bathroom /
Laundry

Kitchen

BI

Living
4.0 x 4.0

Entry

Floor area approx 72sqm

All measurements are internal and approximate
This plan is a sketch for illustration not valuation
Produced by open2view.com for Raine & Horne Sorell