



**SORELL**  
1 & 2/17 Horizon Drive

2  1  1 

## TWO IMMACULATE BRAND NEW UNITS

Here we are offering two brand new, recently finished, quality built units on Horizon Drive, Sorell.

Each unit has two bedrooms both featuring built-in robes, the main having two-way access to the bathroom.

The bathroom has modern tiled splashbacks with a large shower bay, separate bath and vanity.

The kitchen is complete with brand new quality appliances featuring ample bench space plus breakfast bar.

The lounge/dining area is open and heated with reverse cycle heat pump along with an abundance of natural light that shines through the double glazed windows.


The home also has a remote controlled garage with access into the main building.

These immaculate, top quality built units are ready and waiting for you to move in.

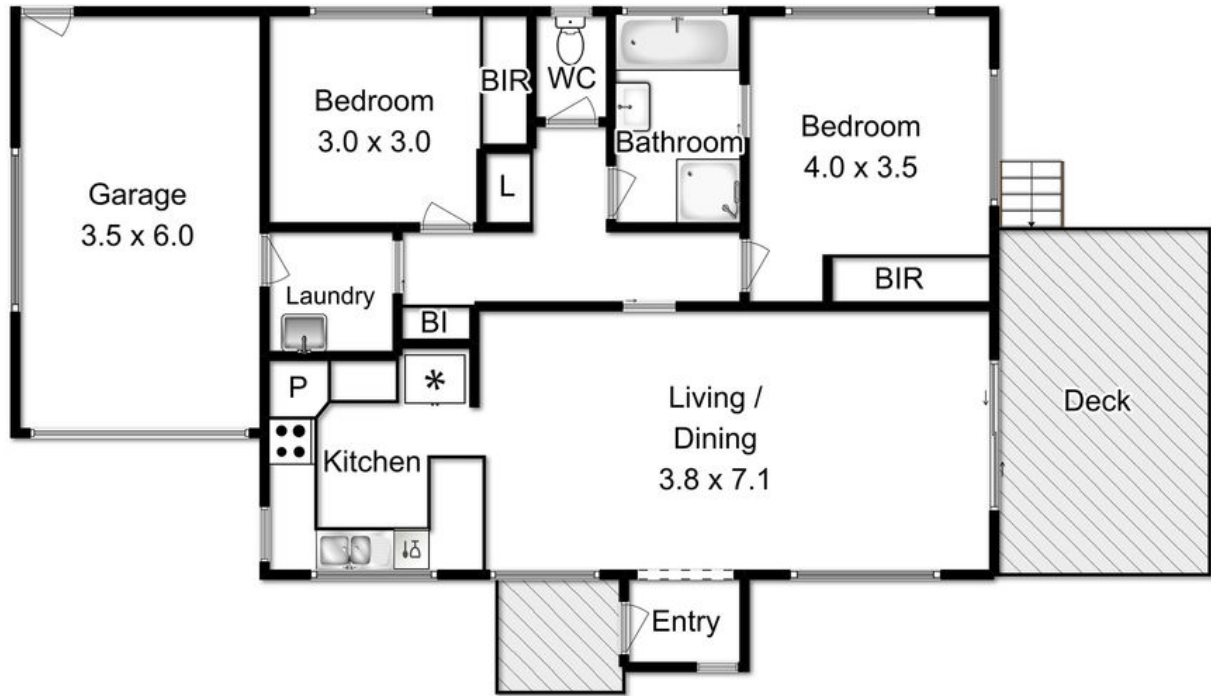
<b>Property ID</b>	L561500
<b>Property Type</b>	House
<b>Building / Floor Area</b>	12
<b>Garages</b>	1

### AGENT

**Danny Boon**

 0427 010 300

 [danny.boon@sorell.rh.com.au](mailto:danny.boon@sorell.rh.com.au)



Fixtures and fittings are for display only and not to scale.  
 All measurements are internal and approximate.  
 This plan is a sketch for illustration, not valuation.  
 Produced by Open2view.com

Approx. house area: 113sqm

