



Just move in!

Raine&Horne

Raine&Horne



4



2



2

18 Beresford Street, Mittagong

Sold

This modern family home is situated in one of the stunning Southern Highlands northern suburbs. This home sits on a grand 1,022sqm block, with an easy care & low maintenance garden. This contemporary designed, family home offers the perfect opportunity for a comfortable easy lifestyle with plenty of opportunity to entertain. With a spacious open plan kitchen, dining & living area as well as a separate media room & 4 bedrooms all with built-in robes. Ideally located within only minutes from Mittagong town centre where you can find an amplitude of shops, award-winning cafes & restaurants, fantastic local schools & pre-schools, medical facilities, stunning parks, lakes & transportation services.

Property features include:

- A large open plan kitchen with Caesarstone bench tops, island bench with breakfast bar & a walk-in pantry with plenty of that all-important storage
- Covered entertaining alfresco area ideal for any entertainer & perfect for BBQ's with family & friends all year round
- Master suite with walk-through wardrobe & ensuite
- Secondary bedrooms all with built-in robes

Property ID: L418247

Property Type: House

Garages: 2

Land Area: 1022.0 sqm

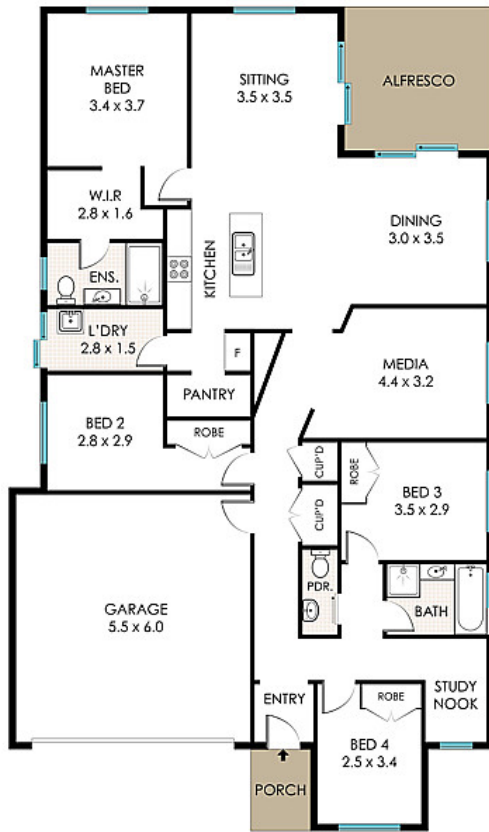
Damien Ogiluy

0423 548 147

damien.ogiluy@sh.rh.com.au

- Generous family bathroom with separate powder room
- Reverse cycle heating & cooling keeping the home perfectly tempered all year round
- Elegant Yorkstone flagging across the front and side of the home
- Ideal side access & secure pet friendly yard

With quick & convenient highway access this property is perfectly central, with a 1.5-hour drive to Sydney & a 2-hour drive to Canberra. Don't let this opportunity to secure this near new home pass. For more information or to arrange a private inspection please contact Damien Ogilvy on 0423 548 147 damien.ogilvy@sh.rh.com.au or Brooke Smith on 0488 555 098 brooke.smith@sh.rh.com.au.



GROUND FLOOR



BERESFORD STREET

SITE PLAN

FLOOR PLAN AREA 185 m²
LAND SIZE 1022 m²

18 BERESFORD STREET, BALACLAVA

Floor plan measurements are approximate and are for illustration purposes only.
Floor plan by Highlands Photography highlandsp photography.com.au
Whilst all reasonable care has been taken in providing this information related companies and their representatives, consultants and agents accept no responsibility for the accuracy of any information contained herein or for any action taken in reliance thereon by any third party whether purchaser, potential purchaser or otherwise.

Raine & Horne