

Light and style in a fresh modern living space



39/62 Grosvenor Crescent, Summer Hill

Sold

Fresh, bright and displaying a smart contemporary style, this freshly renovated security apartment captures the essence of easy living with quality finishes, light filled interiors and a quiet elevated position. This is the perfect pad for city professionals or a great investment option as it is designed for low maintenance living and is ready to move in and enjoy with nothing more to spend. It also enjoys a super convenient location that's level walking distance to the heart of Summer Hill with the train station, village cafes and restaurants all easily accessible on foot.

- An elevated outlook over the complex swimming pool
- Bright and breezy open living space with polished flooring
- Designer kitchen featuring stainless appliances and dishwasher
- Two good-sized bedrooms both have built-ins and ceiling fans
- Sunlit balcony plus a lock-up garage with storage space
- Modern full bathroom, internal laundry and air conditioning

Property ID: L638248

Property Type: Apartment

Garages: 1

Gabriela Rodriguez

0414 652 653

gabriela@rhsh.com.au

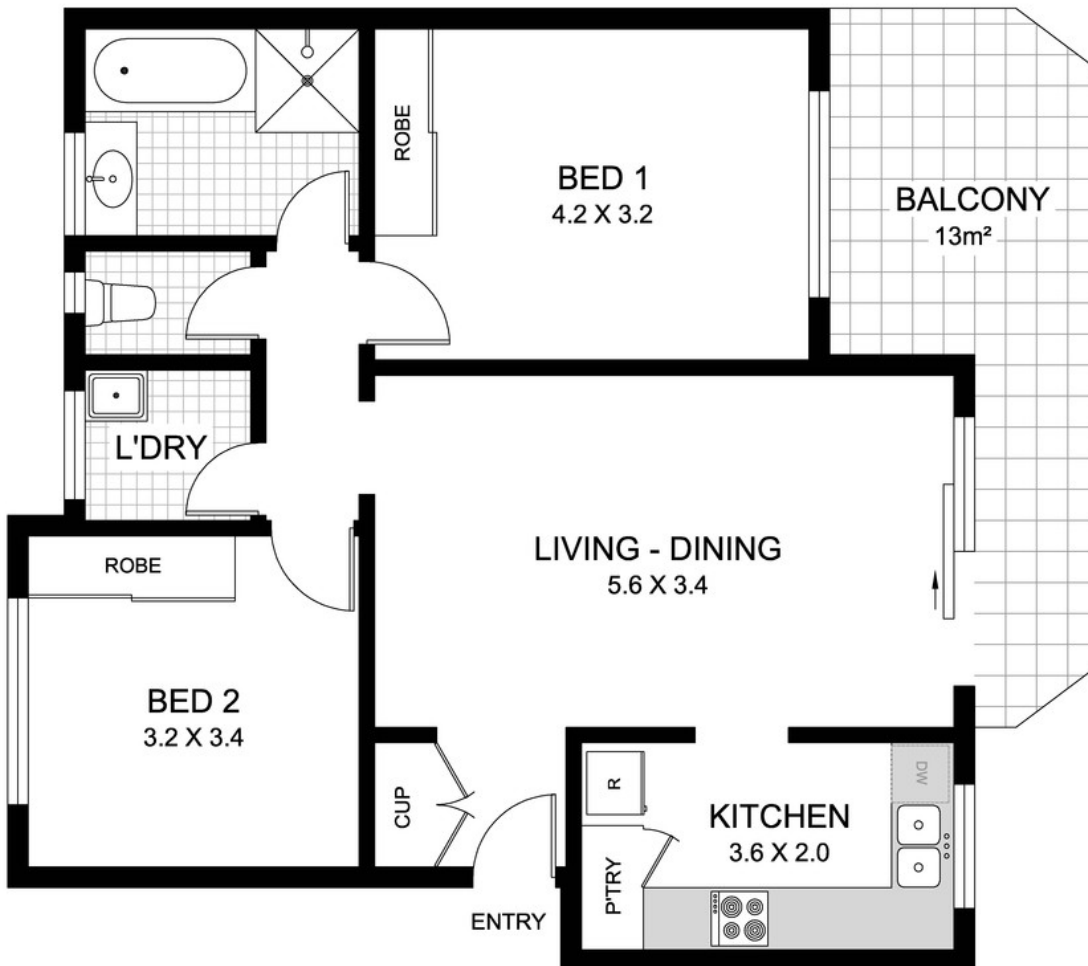
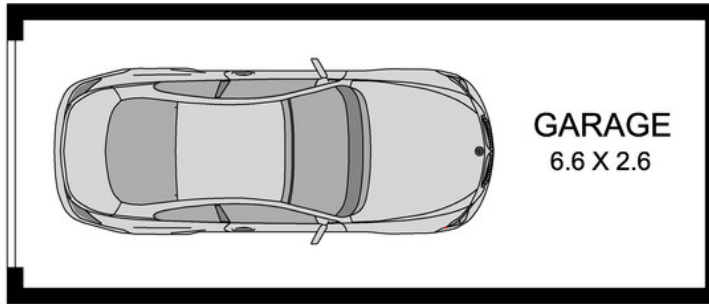
- A short distance to Ashfield's major shopping and transport hub

Water Rates: \$178.11 p/q approx.

Strata Levies: \$964.65 p/q approx.

Council Rates: \$334.00 p/q approx.

DISCLAIMER: This entire document has been prepared as a guide only. The vendor and the agent, Rodhoun Pty Ltd, trading as Raine & Horne Summer Hill make no warranties as to the accuracy. All interested parties must rely on their own enquiries.



39/62 GROSVENOR CRESCENT SUMMER HILL

Raine & Horne

Summer Hill

9799 6044

PLANS SHOWN ARE ONLY INDICATIVE OF LAYOUT. 0 1 3
DIMENSIONS ARE APPROXIMATE SCALE BAR in metres

DISCLAIMER: This entire document has been prepared as a guide only. The vendor and the agent, RODHOVEN Pty Ltd, trading as Raine & Horne Summer Hill make no warranties as to the accuracy. All interested parties must rely on their own enquiries.