

BRAND NEW & READY TO MOVE IN - ONLY 1 REMAINING! BE QUICK!



7/106-108 Main Road, Riddells Creek

BRAND NEW & READY TO MOVE IN - ONLY 1 REMAINING!

With stunning street appeal, quality inclusions and sitting proudly in the heart of the Riddells Creek township you are sure to be impressed with these premium units we have here on offer. Within walking distance to local shops, cafes, restaurants, train station, recreation reserve/playground and Riddells Creek Primary School the location is perfect for young families, professional couples, first home buyers, downsizers or savvy investors.

Unit 7

Features include:

- Single story
- Unit 7 (2 bedroom)
- Master bedroom with WIR and ensuite
- Second bedroom with BIR, central bathroom & separate WC
- 2 bathrooms – one with a bath
- Open plan living to secured courtyard
- Spacious kitchen with stone benchtops, 900mm gas cooktop & electric under bench oven, dishwasher, ample bench and storage space with wall pantry
- Chrome tapware in the kitchen, bathrooms, laundry and door hardware
- Uniformed cabinetry and stone benchtops in the kitchen, bathrooms and laundry
- Timber look flooring in living area, carpets in the bedrooms and tiles in the wet areas

Property ID: L1500464

Property Type: Unit

Garages: 1

Amanda Burt

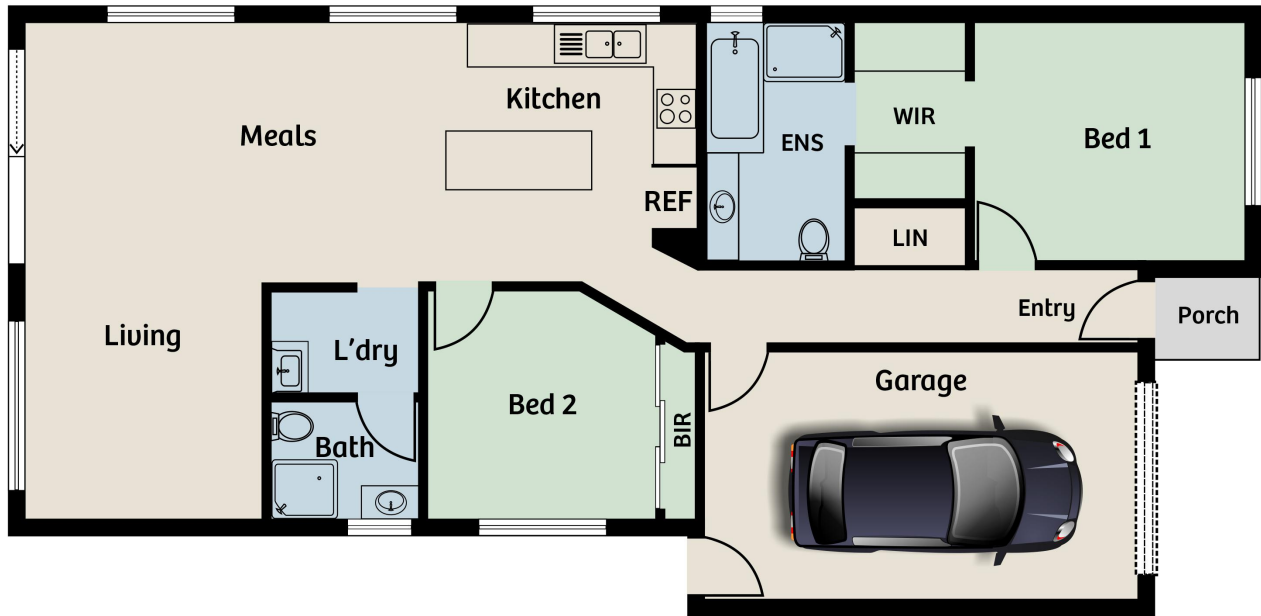
0431 204 265

amanda.burt@sunbury.rh.com.au

- Zoned refrigerated heating and cooling
- Double roller blinds and lockable windows
- Premium timber entrance door
- Single lock-up garage on remote
- Unit 7 with shared driveway at the rear – access via Sutton Street
- Secured low maintenance courtyard
- Landscaped gardens
- Garden shed
- Clothes line
- Instantaneous gas HWS

You are sure to be impressed by the quality, design and craftsmanship of this newly-built unit by a renowned local builder. Call Amanda Burt on 0431 204 265 to organise a private inspection before it's too late!

Unit 7/106-108 Main Road Riddells Creek



Disclaimer: Floor plan, measurements and appliances are approximate and are for illustrative purposes only
Please refer to draftsmans plans for accurate measurements.