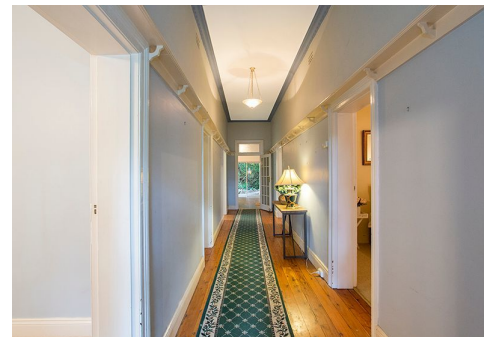


Don't miss this opportunity



144 Brisbane Street, Tamworth

Sold

This gracious single level Federation home rests upon 1535sqm of privately landscaped gardens within a peaceful yet supremely convenient setting. "Glenross" stands as a gracious reminder of Tamworth's rich history and forms an intrinsic part of East Tamworth's streetscape.

This substantial family home boasts many period details including: high ceilings, L shaped verandah, french doors, timber floors, fireplaces and timber windows.

High ceilings soar above the timber floorboards lining the hallway, the light-filled layout of this magnificent home offers casual family living, gracious formal living with a fireplace & french doors leading onto the verandah, generous dining & family room, spacious kitchen, sun room and four charming bedrooms, the main with an ensuite, walk-in robe & dressing room.

Private, secluded & positioned within this blue chip suburb, close to Anzac Park, Treloar Park, CBD and within the catchment area for popular private and public schools. Call now for your inspection. Chris Murray 0418492120.

- All information contained herein is gathered from sources we consider to be reliable, however we cannot guarantee or give any warranty to the information provided.

Property ID: L916954

Property Type: House

Carports: 2

Land Area: 1535.0 sqm

Chris Murray

0418492120

chris.murray@tamworth.rh.com.au