

## GREAT INVESTMENT - CITY APARTMENT IN THE HEART OF ADELAIDE CBD!



**1302/15 Synagogue Place, Adelaide**

**\$326,000**

Accommodation

“Great investment rental returns – \$535 per week for a secured 12 months fixed lease up until 12/02/2021”

This fully furnished apartment is situated in Adelaide’s prime City East End and offers a highly desirable metropolitan lifestyle. You are within walking distance to Rundle Mall with its eclectic mix of retail outlets and eateries as well as Adelaide University’s North terrace City Campus and The University of South Australia’s East and West Campuses.

You will love the sprawling balcony with 180-degree North East City views. This is also an ideal spot to enjoy your morning coffee or simply relax and take in the panoramic view after a busy day at work.

Configured with open plan living and two great sized bedrooms with built in wardrobes and large windows, you will certainly appreciate the airiness and homely ambience of the property. The kitchen area boasts stainless steel appliances, ample storage and bench space.

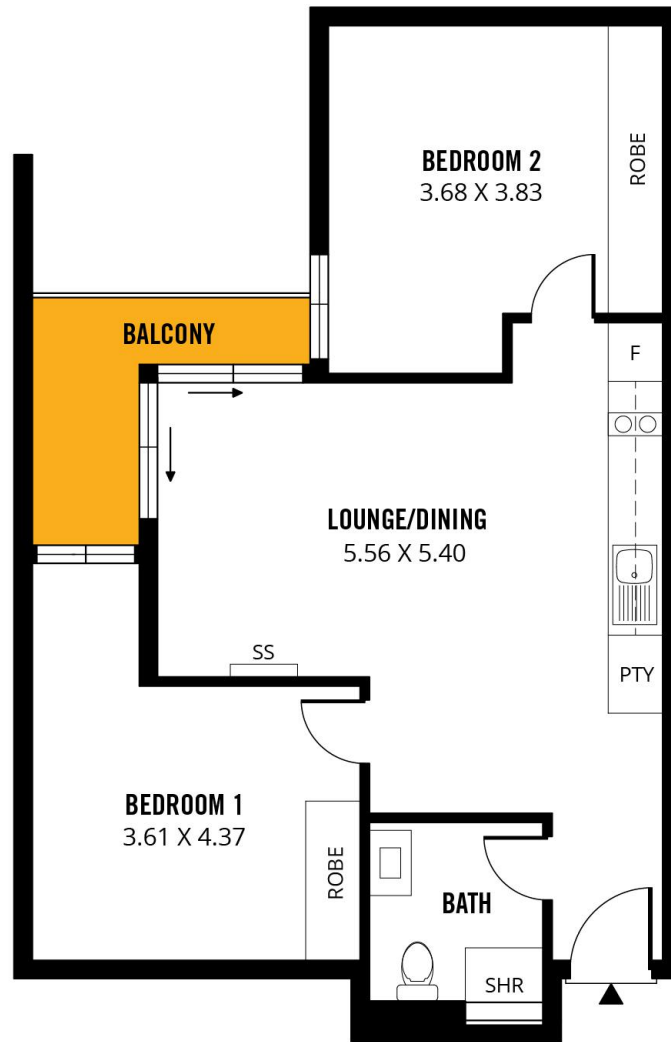
Key Features You Must Be Aware Of:

**Property ID:** L1398820  
**Property Type:** Apartment  
**Building / Floor Area:** 70

---

**Jacky Yang**  
0425 251 113  
jacky.yang@unley.rh.com.au

- Common Areas include: A lounge with Kitchen facilities, entertainment, study rooms, little family cinema and laundry areas
- Two great sized bedrooms with BIR and large windows
- A private balcony to offer you 180 -degree North East city views
- Open plan kitchen with ample storage space
- Reverse cycle wall split air conditioning in living area
- Fully furnished apartment offers you a secured fixed long term 12-month lease contract with clean and responsible student tenants for a weekly rent of \$535. Lease expires on the 12/02/2021



**TOTAL**



Living



Balcony

Scale in metres. This drawing is for illustration purposes only. All measurements are approximate and details intended to be relied upon should be independently verified. Produced by **The Fotohase Group**