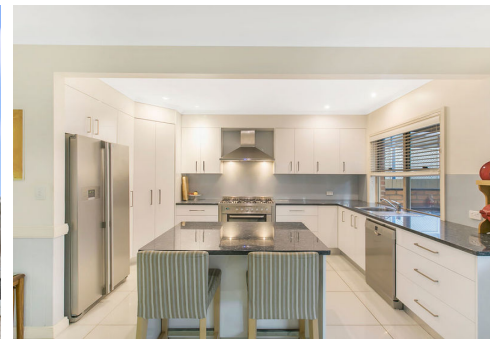




Your Chance to Live on Manly Terraces - How Wonderful !!



3



2



4

## 107 Kingsley Terrace, Manly

Sold

Come & See this charming and comfortable residence situated in the much sought after "Terraces" of Manly. You will discover this classic style home has so much to offer with 3 living areas plus huge outdoor entertaining bar & patio ... it is so wonderfully liveable ... call Margaret to arrange your time to view!

Enjoy an elevated position set back high on the block to allow room for the boat out front and behind the electric gate, plus it gives an outlook to the Bay from upstairs front veranda and captures beautiful cooling bay breezes all year round,

Absolute benefit is you are only a short stroll to the wonderful Manly Esplanade, Manly Village restaurants & cafes, shopping, train and marinas.

Designed to be open and bright with beautiful Bay windows on both upper and lower levels. The large master bedroom is impressive with double door opening and its very own private balcony overlooking the glorious Bay. The lower level of the home features an open plan, formal lounge, including modern kitchen, dining & living areas which adjoins the extensive undercover alfresco deck with built in bar ,.. the perfect space for entertaining.

Classic tones, together with shutters, feature panelled walls and bay windows throughout create a truly comfortable & 'welcome home' feeling.

<b>Property ID:</b>	L901534
<b>Property Type:</b>	House
<b>Building / Floor Area:</b>	284
<b>Garages:</b>	1
<b>Carports:</b>	1
<b>Open Parking:</b>	2
<b>Land Area:</b>	405.0 sqm

**Margaret Vote**

0411 521 747

margaret.vote@wynnum.rh.com.au

Easy access to public transport with convenient rail and bus links directly to the Wynnum Plaza, Brisbane CBD, and direct access to the Port of Brisbane, Gateway Arterial for Sunshine & Gold Coasts, and Gateway Bridge for Brisbane Airport. All reached by driving along the picturesque waterfront to Pritchard Road and only 1 traffic light to get on the motorway ... where else can you enjoy this amazing proximity?

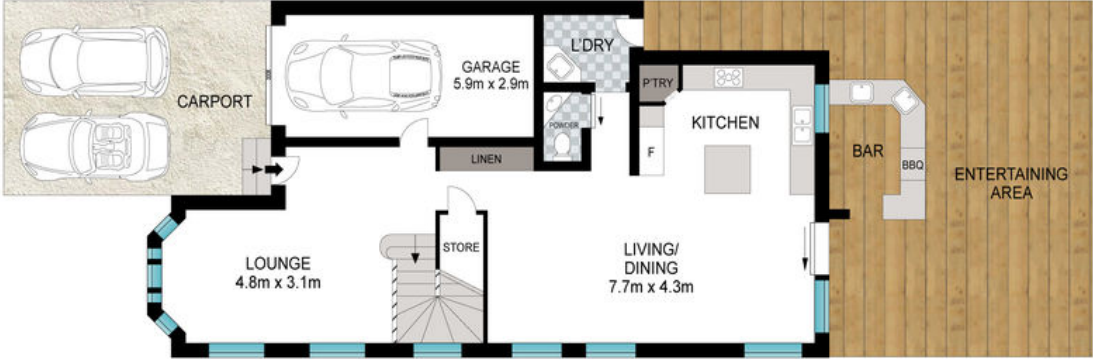
Living Manly Wynnum Bayside is the best move you will ever make!!

Featuring:-

- Master Bedroom with private balcony overlooking the Bay
- Entertainer's kitchen with 5 Burner Freestanding Cooker
- Refurbished bathroom & ensuite
- Powder Room on lower level
- Elevated ceilings with ample windows, louvers and shutters
- Split Air-conditioning and ceiling fans throughout
- Alfresco entertaining & newly landscaped back yard
- Ample storage throughout
- Secure parking with additional off street parking



FIRST FLOOR



GROUND FLOOR



Scale in meters. Indicative only. Dimensions are approximate. All information contained herein is gathered from sources we believe to be reliable. However, we cannot guarantee its accuracy and interested persons should rely on their own enquiries.

INT: 188 m<sup>2</sup>  
EXT: 97 m<sup>2</sup>

107 Kingsley Terrace, Manly