



Large Private Courtyard & Big Covered Entertaining Area



3



2



2

57/10 TRIPCONY PLACE, Wakerley

Sold

Including:

- A new look building, the entire complex has had a fresh start to 2019 with a full external re-paint.
- Fully ducted airconditioning throughout, perfect for those summer days, and winter nights.
- An open planned lounge, kitchen and dining area, perfect to live and entertain.
- This property features one of the largest courtyards in the complex & Seller has contracted a big covered entertaining area.
- Gourmet kitchen, including stainless steel appliances and seamless stone bench tops.
- Three generously sized bedrooms await you upstairs, with built in robes and ceiling fans.
- The main bathroom is perfect for washing the worries of the day away, with separate shower and bath offered.
- Large master bedroom, complete with walk through robe and ensuite.

Property ID: 19921204

Property Type: Townhouse

Building / Floor Area: 109

Garages: 2

Chris Vote

0433 411 540

chris.vote@wynnum.rh.com.au

- Remote access double garage, boasting extra internal storage.
- Your set to be secure with safety features throughout, including a full alarm system, and the reassurance of security screened windows and doors downstairs
- If all this wasn't enough, the complex facility offers a stunning pool and common area to spend the weekend near the water

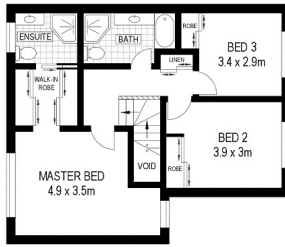
The location:

- Four minute drive to Wynnum Manly waterfront, where the village lifestyle comes alive. Enjoy coffee or cocktails, watersports or shore walks, the opportunities are endless
- Weekends are set to deliver, and a breathtaking lifestyle awaits: explore the many cafes, restaurants, farmers & boutique markets, & of course wandering the idealistic harbour marinas.
- Excellent location for Moreton Bay Colleges
- Just a short stroll to the Mayfair on Manly Shopping precinct.
- Short bus trip to Brisbane CBD (for more exploring) or Carindale Westfield.

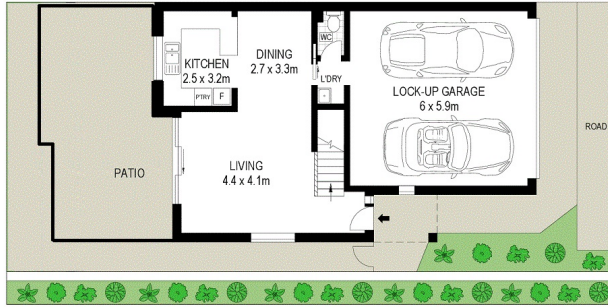
Administrative fund: \$39.39/week approx.

Sinking fund: \$31.33/week approx.

Please Note: Internal photos displayed may not always be of the actual unit, but are indicative of the style and quality of all units in this complex



UPPER LEVEL



GROUND LEVEL



Scale in metres. Indicative only. Dimensions are approximate. All information contained herein is gathered from sources we believe to be reliable. However we cannot guarantee its accuracy and interested persons should rely on their own enquiries