



SOLD BY DENISE QUICK



4



2



5

47 Crisp Drive, Ashby Heights

Sold for \$410,000 (Jun 12, 2019)

Picture yourself set high on the hill in Ashby Heights with its peaceful rural views and nature as your neighbour. Sounds great doesn't it!

Well this could be your lifestyle if you are lucky enough to secure this unique family home with fabulous views over the Broadwater as your own.

Striding over 2 levels this expansive home offers so much more than initially meets the eye. Recently renovated throughout you can't help but be impressed with the brand new flooring, window coverings and paint work that greet you.

The spacious open plan living and dining airconditioned areas downstairs flow seamlessly into the brand new well appointed chef's kitchen. Boasting dishwasher, breakfast bar, ample storage and glossy finishes the family cook is going to be thrilled with the finishes on offer.

Downstairs also features 2 generous bedrooms with floating floors and built in robes and a well appointed main bathroom with both shower and bath.

As you climb the brand new feature timber staircase to the upper level you are greeted with a second airconditioned living space with raked ceilings and doors opening out to the top deck which enjoys breathtaking views of the Broadwater and hinterland nearby.

Property ID: 20490748

Property Type: House

Garages: 2

Carports: 3

Denise Quick

0439 462 474

denise.quick@yamba.rh.com.au

Another 2 double bedrooms with built in robes and feature raked ceilings and the full 2nd bathroom are also on this level.

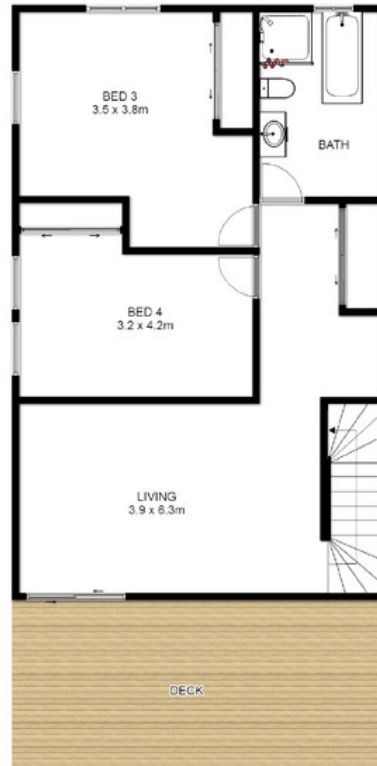
Outside, there is so much more on offer a dam, double garage and three carports, fenced yards, 4 water tanks, sealed road and much more.

Situated only 25 minutes from the coast and 20 minutes from Maclean, this fantastic property feels as though its miles from anywhere

If a rural lifestyle is what you are after than this property is a must to inspect.



DOWNSTAIRS



UPSTAIRS



ASHBY
47 Crisp Drive

Disclaimer: For illustration purposes only. All dimensions are approximate and illustrations are not to scale. Particulars given are for general information only and do not constitute any representation by the vendor or agent.

