



TWEED HEADS
1/20 Frances Street

3  2  2 

Deluxe Green Bank Ground Level Unit

Sold for \$640,000 (Apr 05, 2019)

This residence offers well sized bedrooms, open plan living, kitchen with granite bench tops, timeless bathrooms, double remote garage and all of this located on a perfect corner, ground floor unit position. What truly makes this home spectacular is its large and partially undercover entertaining area with direct ramp access outside making it convenient for lifestyle living absolutely all demographics. The central location is even more perfect within easy walking distance to the Tweed Mall, Stunning Tweed Waterways, the bowls club and Tweed Hospital. The complex is one of only eight and all the owners meticulously maintain the grounds and overall maintenance of the property to the highest standard. This property has security screens and gated basement parking making it extremely safe and secure. We look forward to seeing you at an inspection To truly experience the lifestyle, location & value this home offers.


Unit located corner of McGregor and Powell Streets


- Rare Ground Floor Unit
- Private Single Level Access
- Spacious Open Plan Design
- Huge Patio Area
- Undercover Entertaining
- Double Lock Up Basement Garage

Property ID:	8809077
Property Type:	Unit
Garages:	2

AGENT

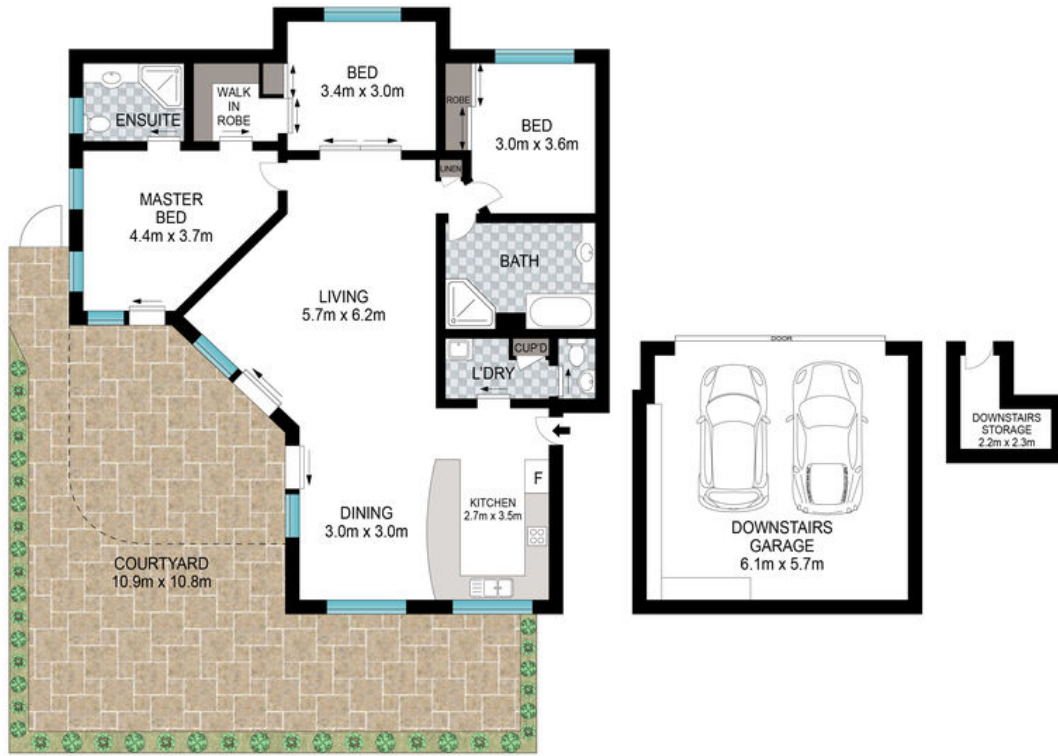
Kasey Pereira

 0435285159

 kasey.pereira@banorapoint.rh.com.au

- Walking Distance to Shops, Clubs & Public Transport & Jack Evans Boat Harbour

DISCLAIMER: We have in preparing this document used our best endeavours to ensure the information contained is true and accurate, but accept no responsibility and disclaim all liability in respect to any errors, omissions, inaccuracies or misstatements contained. Prospective purchasers should make their own enquiries to verify the information contained in this document.



Scale in meters. Indicative only. Dimensions are approximate. All information contained herein is gathered from sources we believe to be reliable. However, we cannot guarantee its accuracy and interested persons should rely on their own enquiries.

INT: 138 m²
EXT: 23 m²



1/20 Frances Street, Tweed Heads

Raine & Horne



Kasey Pereira

M 0435 285 159
T 07 5513 0300