



BANORA POINT
8/32-34 Martinelli Avenue

SOLD
Tate Brownlee

In exclusive East Banora Point set back from the street in its own private gated cul de sac sits this exceptional building block. The block offers the unique position of backing onto natural rainforest offering the perfect tree canopy from your back yard. The land size is 2.39ha and has a great building envelope of approximately 550m2 and the rest of the land is purely protected rainforest. This could be the perfect block wanting a quiet and unique rainforest lifestyle only minutes to the M1 and in the exclusive pocket of East Banora Point. The only limitation on this block is your imagination.

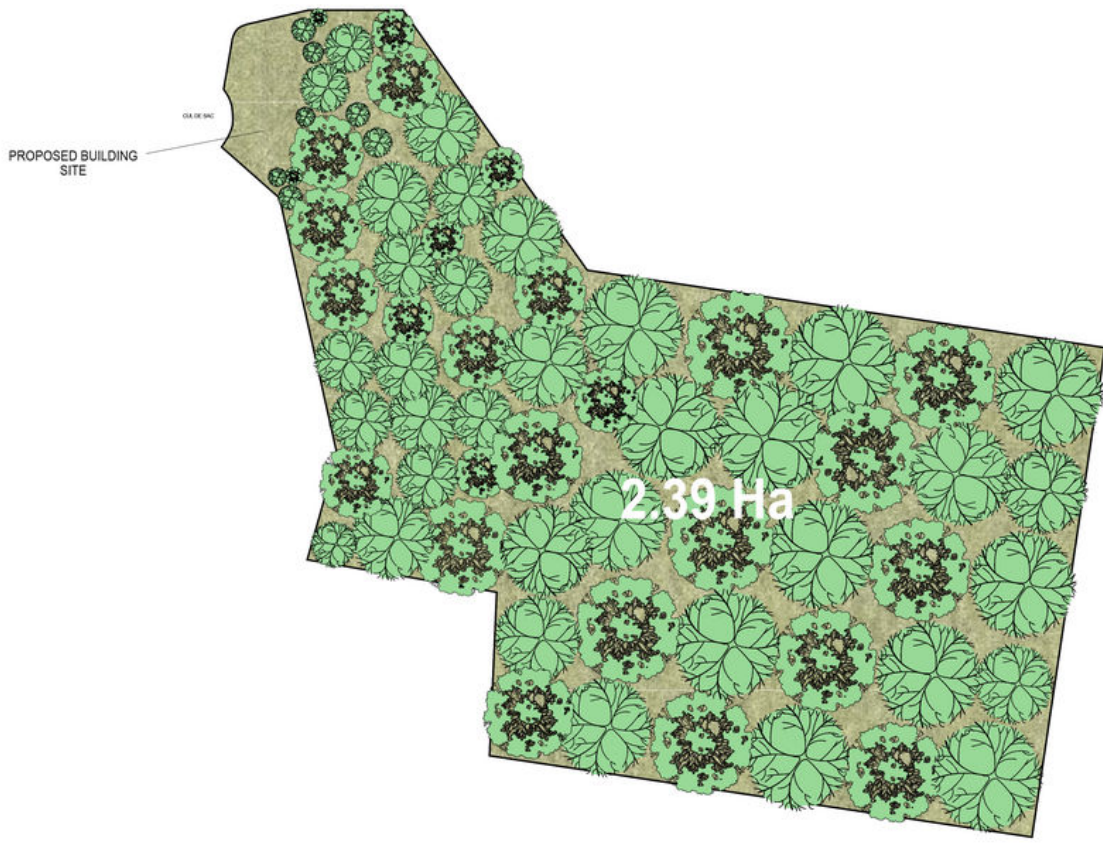
- Unique Gated Estate
- Blue Ribbon East Banora Location
- Surrounded by natural rainforest
- Private Road
- Quiet cul de sac location

DISCLAIMER: We have in preparing this document used our best endeavours to ensure the information contained is true and accurate, but accept no responsibility and disclaim all liability in respect to any errors, omissions, inaccuracies or misstatements contained. Prospective purchasers should make their own enquiries to verify the information contained in this document.

Property ID	21409470
Property Type	Land

AGENT

Tate Brownlee
📞 0401 176 633
✉️ tate.brownlee@banorapoint.rh.com.au



PROPOSED BUILDING SITE

2.39 Ha

SITE PLAN

Scale is indicative only. Dimensions are approximate. All information contained herein is gathered from sources we believe to be reliable. However, we cannot guarantee its accuracy and interested persons should rely on their own enquiries.

8/32-34 Martinelli Avenue, Banora Point

Raine & Horne



Tate Brownlee

M 0401 176 633
T 07 5513 0300