



Private North Facing Luxury Apartment



2



2



1

11/2 Rowe Street, Five Dock

Preview

Situated within the highly sought-after Kings Bay Complex, this super-sized luxury apartment offers resort-style living at its convenient best. From the moment you enter, you'll be entranced by the light filled spacious living area flowing onto an over-sized covered balcony, perfect for the entertainer to enjoy alfresco dining in a serene and private setting.

Elevated on the 1st floor and with thoughtful design taking advantage of its north-facing aspect, this sun-drenched light and airy apartment features:

- Brand new quality timber flooring, neutral decor, and new paint both inside and out
- Luxurious sized bedrooms both with mirrored built-in wardrobes including large en-suite to the main
- Main bathroom with stone bench-tops, bathtub and separate shower
- Spacious separate lounge, dining and study alcove with high ceilings creating a bright, open and airy living space
- Reverse cycle air-conditioning. Internal laundry
- Gas fitted modern stone kitchen with stainless steel European appliances, extra bench space & pantry
- Covered entertaining balcony including BBQ gas bayonet
- Internal access to lock-up garage with room for storage

Property ID: L4114553

Property Type: Apartment

Garages: 1

Sam Coggnetta

0417 273 377

sam.coggnetta@fivedock.rh.com.au

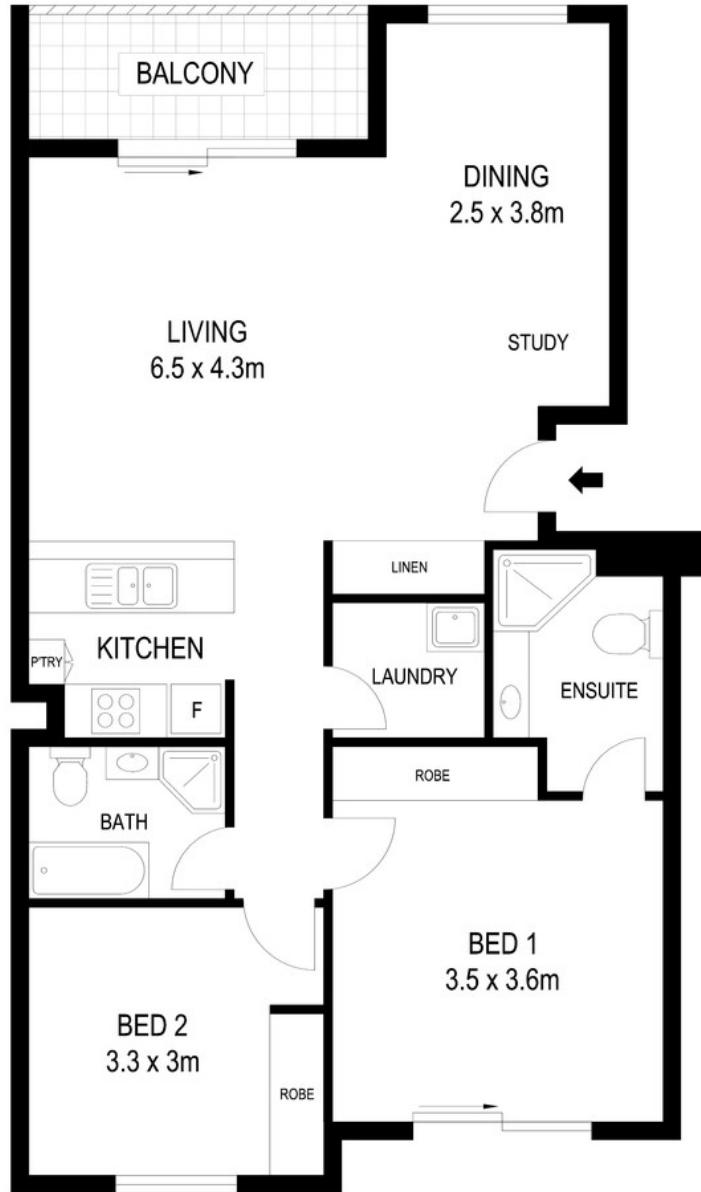
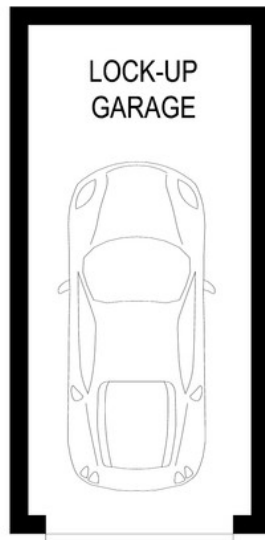
- Pool, BBQ areas, gym, kids playground, parks and manicured gardens throughout

Located no more than a short stroll to the tranquil Hen & Chicken Bay, Five Dock's shopping & cafe strip, as well as Canada Bay foreshores & parks. Local schools and transport direct to the CBD are just minutes away.

This is relaxed and effortless living at its best, with spacious living areas, attentive design and sunny interiors, as well the enjoyment of all the recreational facilities without any of the work.

This is a must see on your Saturday inspection list – a sound investment or your wonderful new home.

11/2 Rowe Street, Five Dock



DISCLAIMER
DIMENSION ARE APPROXIMATE AND SHOULD ONLY BE USED AS A GUIDE.
THEY ARE NOT TO SCALE AND NO LIABILITY WILL BE ACCEPTED.

Raine&Horne®