



**Deceased Estate on over 1200sqm -
Executor Sale by Auction**



4



1



1

9 Park Avenue, Roseville

Auctioned for \$3,280,000 (Feb 23, 2019)

SOLD AT AUCTION – CONTACT HUGH 0418 270 993

This estate sale offers a significant holding, boasting the rare combination of a large level block, no conservation restrictions, and multiple options for the astute purchaser.

Currently a dilapidated brick home with North/South tennis court, the choice is yours to renovate or rebuild STCA.

Set in a premiere, family friendly position surrounded by quality homes, just metres from Roseville Primary School, zoned for Killara High School, and easy access to nearby Chatswood CBD. Well serviced by transport options, parks and golf course and boasting all the amenity this sought after location affords, this is blue ribbon real estate.

Approximate Land Size: 20.115m x 60.96m = 1,226sqm

Property ID: 19771672

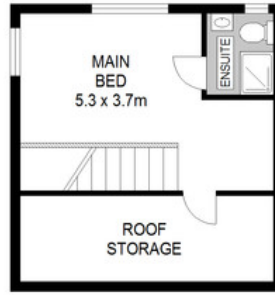
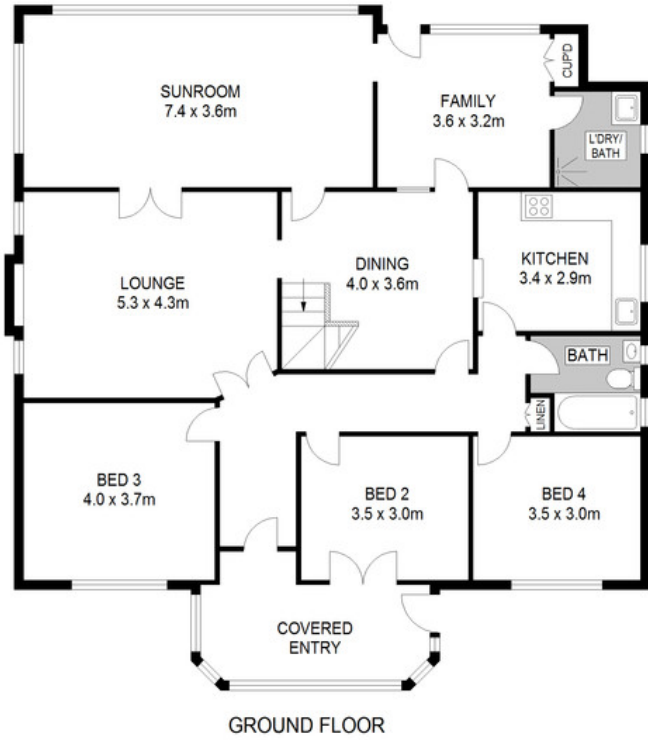
Property Type: House

Garages: 1

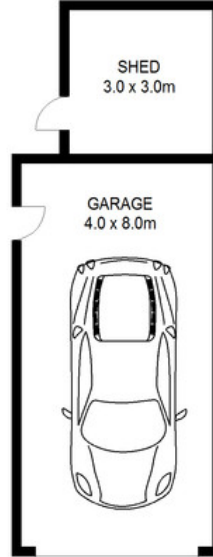
Hugh Macfarlan

0418 270 993

hugh.macfarlan@rhhmgroup.com.au



FIRST FLOOR



SITE PLAN (NOT TO SCALE)



All information contained herein is gathered from sources we believe to be reliable. We cannot however guarantee its accuracy and interested parties should make and rely on their own enquiries



Raine & Horne.
HM Group

9 Park Avenue

Roseville