



Harbourfront Designer Living - Unfurnished



Lvl 4/17 Barangaroo Avenue, Barangaroo

Rented

An exquisite residence of undeniable quality and unparalleled setting, this breathtaking apartment offers a premier opportunity an exceptional blue ribbon community. Filled with natural light, the home is dominated by views that stretch across Darling Harbour to the Balmain Peninsula.

Features:

- Well designed to maximise the flow of light and space
- Inviting master bedroom with ensuite and walk-in robe
- Sleek integrated kitchen, stone benches, gas fixtures
- Sunny balcony, chic bathroom, frameless glass shower
- Ducted air conditioning, secure parking
- Furnished or unfurnished option also available on negotiation
- Sorry, no pets allowed

Property ID: R674018

Property Type: Apartment

Garages: 1

James Astor

0447984645

jamesa@rhcityliving.com.au

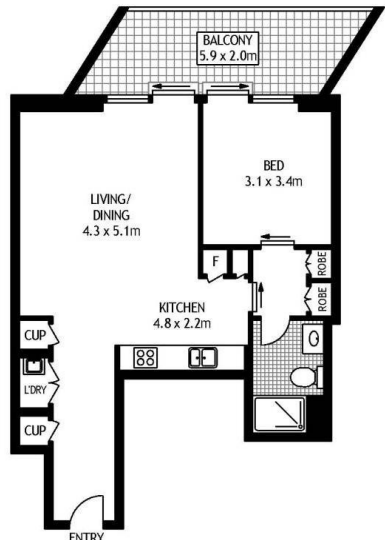
What you will love!

Nestled between the natural beauty of Sydney Harbour and the bustling global city of Sydney, Designer living at it's finest. you will enjoy the wateruiews, the livelihood of Sydney and the convenience of living in the heart of the CBD.

What you need to know!

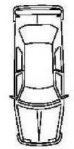
- Availability: Now
- Disabled Access: Yes
- Laundry Facilities: Internal laundry facilities with dryer + washer
- Unfurnished or furnished
- Parking: 1 x Secure Car space
- Cooking: Gas
- Heating or Cooling: Reverse cycle ducted air conditioning
- Walkscore (According to www.walkscore.com): 82/100 – Very Walkable.
- Public Transport: A public transport network services the area, providing efficient ferry and bus connections to the city.

Contact Raine & Horne today on 8586 7800 to arrange a viewing.



STORAGE CAGE

SINGLE SECURITY PARKING




FOURTH FLOOR

403/17 Barangaroo Avenue

BARANGAROO

SCAPE Floor Planing Disclaimer: This floor plan is conceptual only. It is provided for illustrative purposes only and should not be relied upon. We make no guarantees to the correctness of this plan. All interested parties should make and rely on their own enquiries in determining the accuracy of the information contained in this floor plan.