



Site 218 Sheoak Court, Hillier Residential Park



2



1



1

## 218/36 Hillier Road, Hillier

Sold

Nestled in a quiet pocket of Hillier Residential Park close to all of the facilities is this fantastic 2 bedroom home that will make the perfect lifestyle change to those over 50. The home is packed full of features that include:

- 2 Spacious bedrooms (master includes a large walk in robe)
- Spacious dining area overlooking the kitchen with ample cupboard and bench space.
- Spacious lounge and living area allowing plenty of room for the family and friends to congregate.
- Sparkling Bathroom with separate toilet and vanity.
- Ample reverse cycle air conditioning to keep you comfortable year round.
- Roller shutters to most doors and windows for your privacy and security.
- Large undercover entertaining area perfect for entertaining friends or for transforming into another parking area.

Property ID: L459188

Property Type: House

Carports: 1

**Steve Spurling**

0421 571 682

steve.spurling@salisbury.rh.com.au

- Solar power to help ease the pain of solar electricity prices.

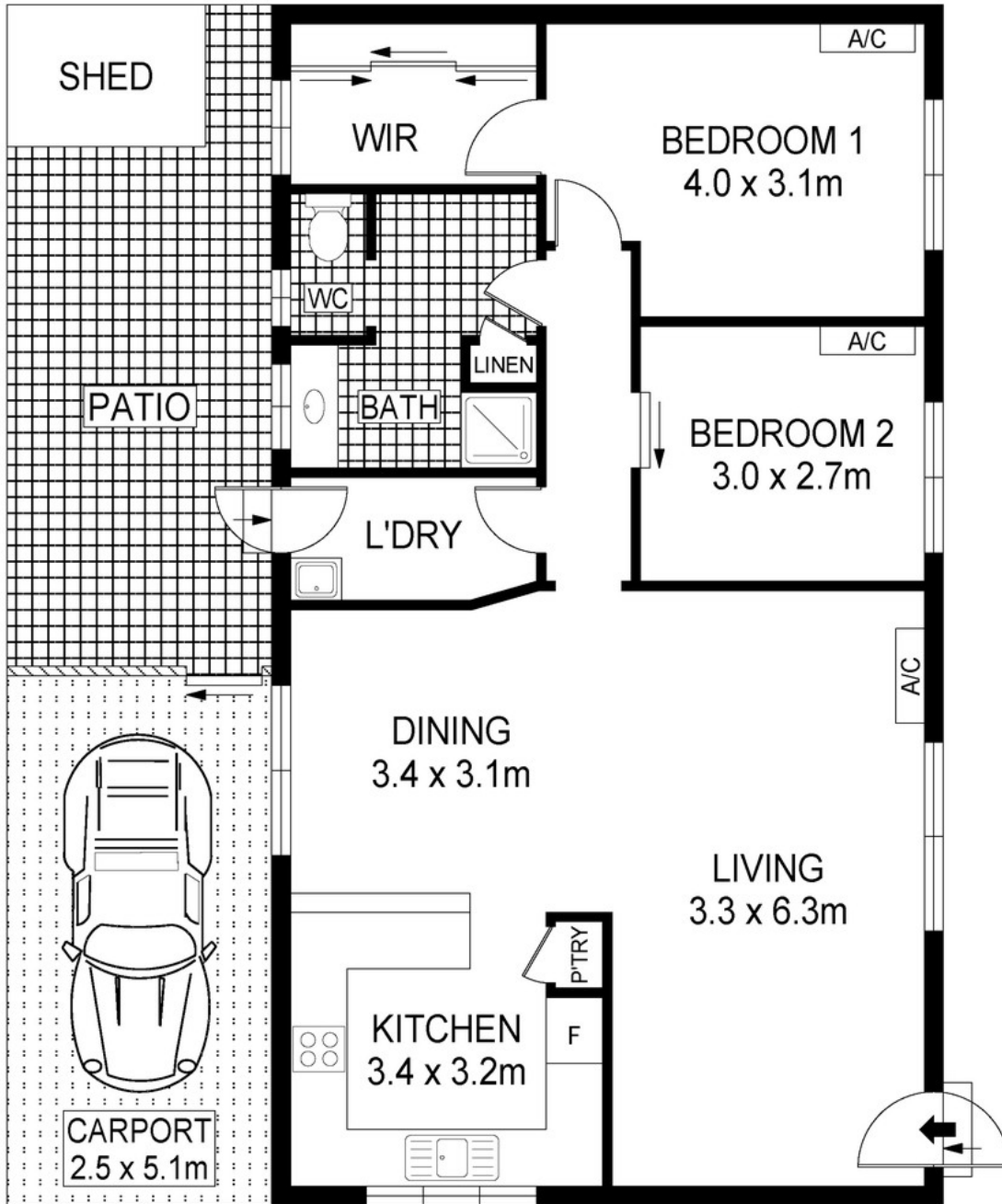
- Lock up tool shed to keep the handyman happy.

All of this and more located within Hillier Park with its Beautiful facilities including two in-ground swimming pools, manicured and fully maintained gardens, BBQ areas and extensive walking trails. The central facility of Hillier Park is the Community Hall, ably operated by an active and well equipped social club making it easy to enjoy the company of friends and neighbors. There is also a Recreation Hall that features a Billiards Room and Gymnasium.

Nestled on the western fringe of Gawler, Hillier Park provides a country living feel while still close to essential services. Hillier Park has created a beautiful secure, peaceful environment infused with a lively community spirit.

For more information on the home or on Hillier Park, please do not hesitate to contact Steve Spurling for your private inspection

RLA227475



Scale in metres. Indicative only. Dimensions are approximate. All information contained herein is gathered from sources we believe to be reliable. However we cannot guarantee its accuracy and interested persons should rely on their own enquiries. Ref. No: 69243



218 SHEOAK COURT, HILLIER PARK