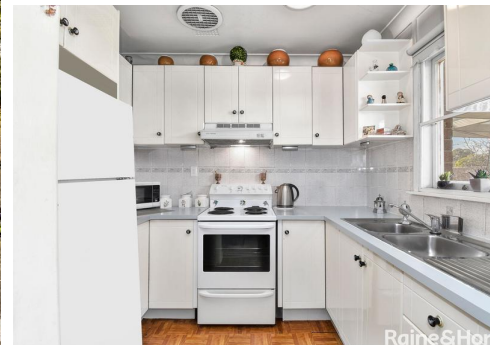




Cul-De-Sac Location on 771sqm Block



3



1



2

## 3 Nursel Place, Tregear

Sold for \$500,000 (Aug 18, 2020)

Truly packed with great value, this three bedroom brick home which is located on a 771sqm block of land at the end of a small cul-de-sac and is only minutes away from Plumpton Marketplace, Westfields Shoppingtown, M7 Motorway on/off ramps, Mt Druitt train station with bus stop a minute away and 20 minute drive to all the new outlets at Marsden Park including Ikea, Bunnings, Aldi, Lindt Factory, Costco and other outlets

Features include:

- 3 good sized bedrooms with built in robes to two bedrooms
- Separate living & dining spaces
- Timber floors throughout
- Undercover decking area overlooking the entire yard
- Huge backyard with garden shed
- Plenty of driveway parking with access to yard through gates

Property ID: L2596226

Property Type: House

Open Parking: 2

Land Area: 771.0 sqm

**Jack Turner**

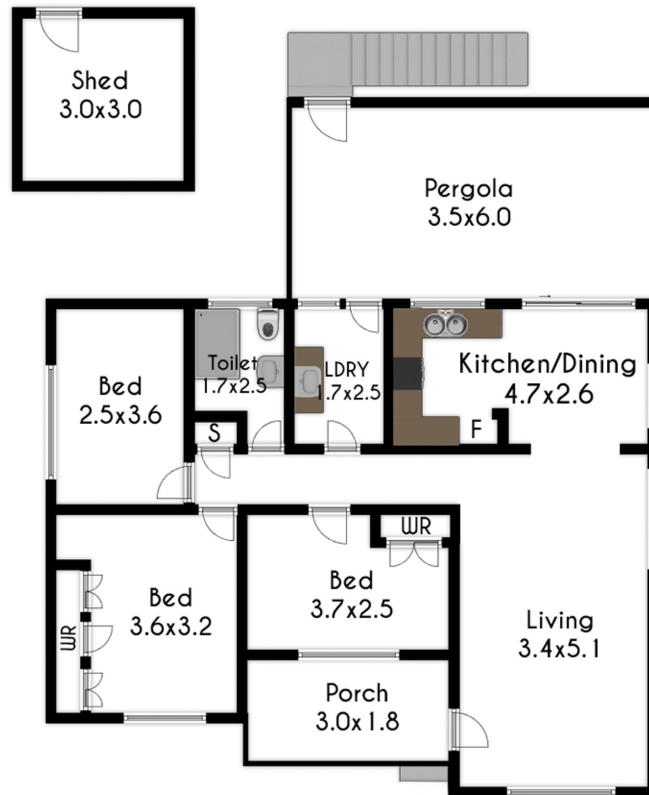
0434554430

jack.turner@stmarys.rh.com.au

This would be ideal for a family looking at purchasing their first home or investor looking for a great return opportunity. Don't miss this great house, it wont be on the market for long.

Contact Jack Turner on 0434 554 430 for further details.

- All information contained herein is gathered from reliable sources, however we cannot guarantee its accuracy and all persons should rely on their own enquirers. Distances & amounts are approximate \*



*DISCLAIMER: Whilst we deem this information to be reliable, we cannot guarantee its accuracy and accept no responsibility for such. Interested persons should rely on their own enquiries.*

