



BROULEE
5/62-64 Smith Street

3  2  2 

BEACHSIDE IN BROULEE

Have you been scouring the web to find a place in Broulee in your price bracket? Well so has everyone else and that is why this spacious townhouse needs to be on the top of your inspection list!

Located in the heart of Broulee only 150 metres to the beach and a short walk to popular Candalagen Creek this complex even has its own direct walkway through to the shopping complex and beach.

Facing north and enjoying the morning sun, the floor plan of this townhouse is one of its best features. As you walk in the door you into the open plan living room you will enjoy the space a high raked ceiling offers. The master bedroom is also located downstairs with a bathroom you could almost call an ensuite.

An open staircase leads you upstairs where both bedrooms enjoy their own private and sunny deck. Here you can sit easily enjoying the sound of crashing waves reminding you just how close you are to the beach. A bathroom is located upstairs servicing both bedrooms making this a convenient home that suits a family.


A private courtyard at the off the downstairs living is a perfect place to barbeque in the summertime or a great spot for your potted plants. This townhouse has a single lock up garage that has had a floating floor put in to use as another living space if you desire ad this property is also allocated a visitor parking space ideal if you have two vehicles.

Location is everything and you could not find a better place to secure a tidy property in Broulee's thriving market. Call me now to arrange your inspection before someone else beats you to it!

Property ID	L431287
Property Type	Unit
Garages	2

AGENT

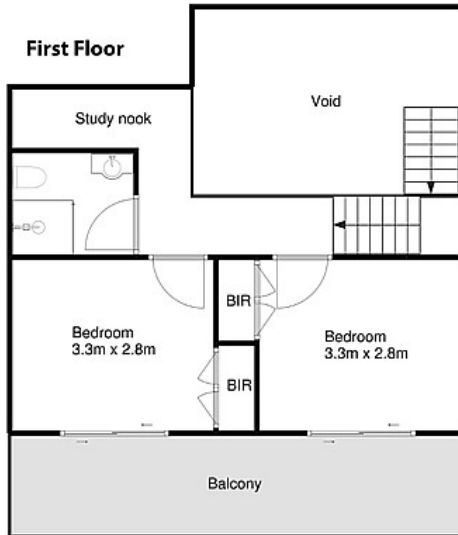
Peggy McAlister

 0401 481 192

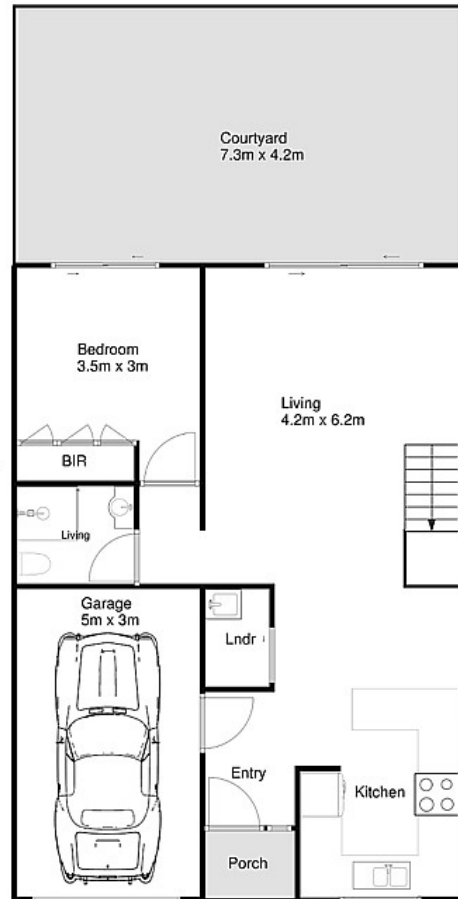
 peggy@rhatemansbay.com.au

5/62-64 Smith Street, Broulee

Approx. floor area inc. decks = 172.2m²



Ground Floor



Whilst bwrm.com.au has made every attempt to ensure the accuracy of the floor plan contained here, measurements are approximate and no responsibility is taken for any error, omission, or mis-statement. This plan is for illustrative purposes only.