



"BIWA" CIRCA 1903



6



4



2

255 Bentinck Street, Bathurst

AUCTION

Situated on an established 1,580sqm block in an ideal location close to town, this property was built circa 1903 and has been beautifully restored and renovated offering family living of the highest of standards. Completely renovated throughout while still retaining the original elegance, this stunning home is oozing with character and is sure to impress. With multiple generous living areas boasting enough space for the entire family including a separate two-bedroom house with the potential to be subdivided (STCA), you just can't go wrong with this one. Call today to arrange an inspection.

Features include but are not limited to:

- Modern kitchen with stone benches, 900mm gas cooktop and dual wall ovens
- Butler's pantry and combined laundry
- Open concept meals and family area flooded with natural light
- Spacious separate living room and a cosy separate media room
- Four generously sized bedrooms plus a great study/home office

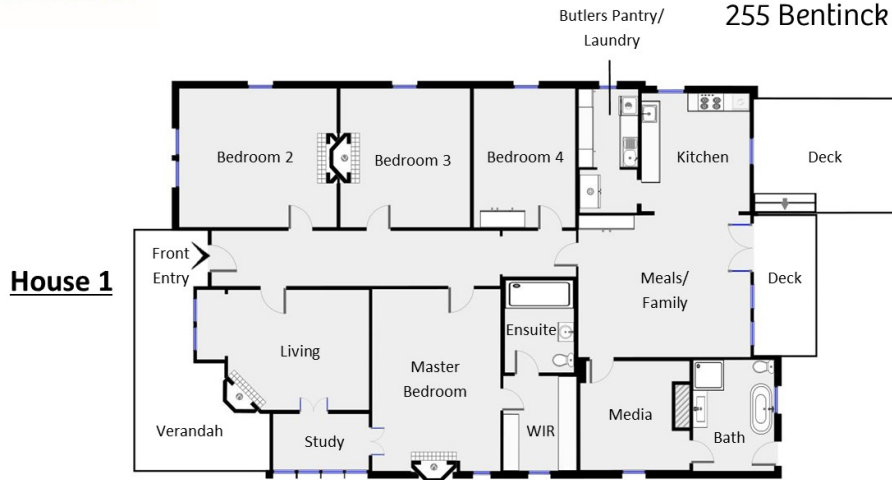
Property ID:	L2974270
Property Type:	House
Garages:	2
Land Area:	1580.0 sqm

Grant Maskill-Dowton

0459406206
grant.maskill-
dowton@bathurst.rh.com.au

- Luxurious walk-in robe and ensuite with double shower to the master bedroom
- Stunning family bathroom with freestanding bath, vanity, shower and toilet
- Polished timber floors, decorative cornice, ornate fireplaces and high ceilings
- Ducted gas heating and split system air conditioning
- Expansive deck entertaining with undercover area plus a firepit area
- Side access to the sizeable, established rear yard
- Separate double lock-up garage with automatic doors
- Separate two-bedroom house ideal for the in-laws, teenagers or as a B&B with the potential to be subdivided (STCA)
- Walking distance to both primary and secondary schools
- Short walk to Centennial Park with children's playground

VENDOR WILL CONSIDER ALL REASONABLE OFFERS PRIOR TO AUCTION



Disclaimer: Floor plan dimensions are approximate. Indicative only. All information contained herein is gathered from sources we believe to be reliable, however are to be used as a guide only, we cannot guarantee its accuracy and interested persons should rely on their own enquiries.