



UNIQUE, NORTH-FACING ABODE



5



2



2

30 Lorimer Street, Llanarth

Buyers Guide \$540,000 to \$570,000

Nestled peacefully on an established 952sqm parcel neighbouring Max Kingston Park in Llanarth, this delightful property is on the market to be sold. Boasting a northerly aspect to the front with mountain views, this unique property is oozing with charm and character and is sure to impress. Call today to arrange an inspection.

Features include but are not limited to:

- Open concept kitchen, meals, family and living area with vaulted ceilings
- Modern kitchen with stone benches and plenty of storage
- Five generously sized bedrooms (three with built-in robes)
- Large family bathroom plus an ensuite to the master with spa bath
- Ducted heating and cooling throughout
- Extensive paved outdoor entertaining area with shade sails
- Side access to the separate double bay garage with power

Property ID: L4116033

Property Type: House

Garages: 2

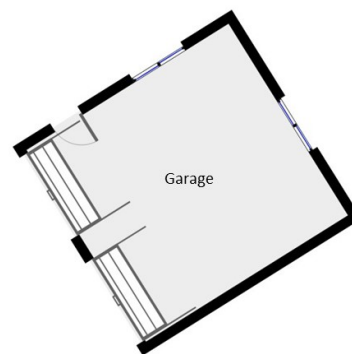
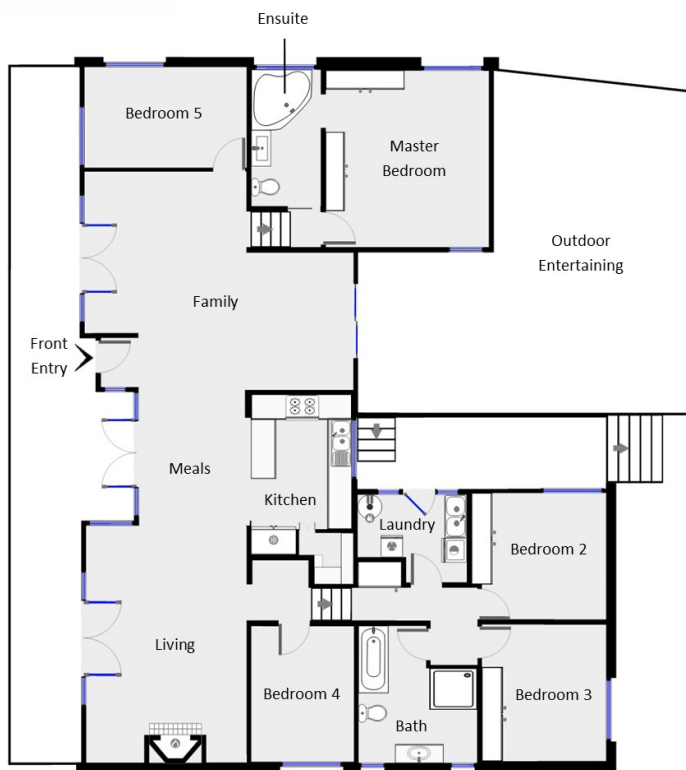
Land Area: 952.0 sqm

Natalie Moase

0404066929

natalie.moase@bathurst.rh.com.au

- Well-sized, fully-enclosed and established rear yard
- Neighbouring Max Kingstone Park with children's playground
- Currently tenanted at \$440 per week on an lease till June 2021



Disclaimer: Floor plan dimensions are approximate. Indicative only. All information contained herein is gathered from sources we believe to be reliable, however are to be used as a guide only, we cannot guarantee its accuracy and interested persons should rely on their own enquiries.